

More control,
less stress.



Evolution[®] Colonic

CONTROLLED-RELEASE STENT - UNCOVERED



www.cookmedical.com

More control, less stress.

The braided-to-coiled construction of the Flexor allows for unparalleled trackability and maneuverability for deployment in difficult angulations

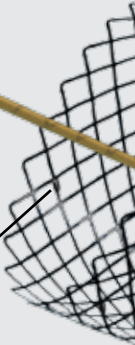
Stent position immediately after placement



Image courtesy of Dr. Alessandro Repici, Istituto Clinico Humanitas, Rozzana (Milano), Italy

Rounded tip design to reduce trauma and to aid in traversing abnormal anatomy

4 radiopaque markers at each end provide visualization for more precise placement



Evolutionary Design

Evolution is designed with 20 crowns (atraumatic looped ends) for enhanced, evenly distributed radial force and better wall apposition. This allows the stent to adapt to the natural curves of the anatomy while potentially reducing the risk of delayed perforation.

Proximal and distal flanges designed to reduce the risk of migration

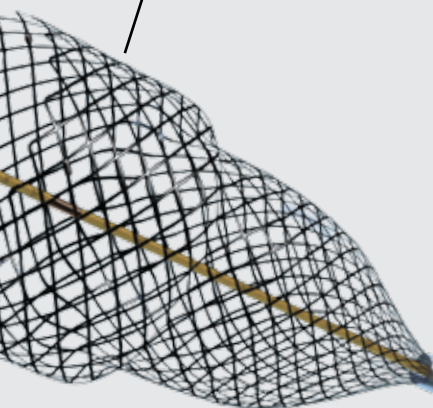
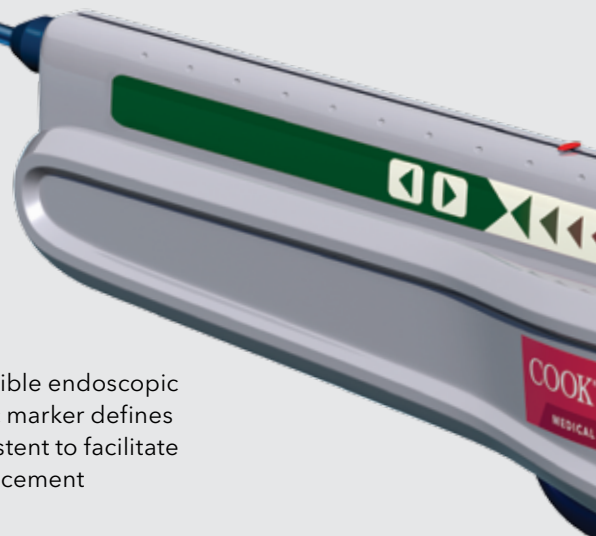


Image courtesy of Dr. Mario Traina, IsMeTT, Palermo, Italy

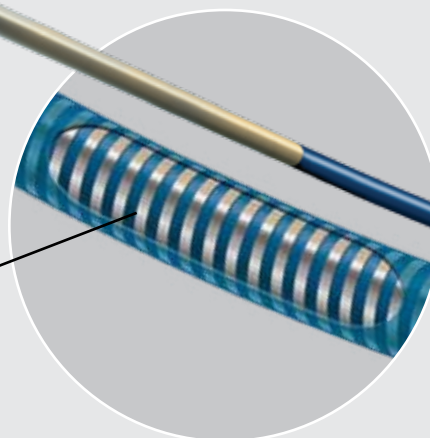
Yellow, highly visible endoscopic and fluoroscopic marker defines proximal end of stent to facilitate more precise placement



Each squeeze of the trigger deploys - or recaptures - a proportional length of stent

Flexor® Kink-Resistant Technology delivers excellent pushability for difficult anatomical challenges

The coiled portion of the Flexor provides improved stability at the crucial point near the proximal end of the stent and allows greater flexibility without kinking



Evolutionary Control

With Evolution - the only stent delivery system with controlled release and recapturability - you will experience unprecedented precision and trackability during stent placement. Every action applied to the trigger-based handle causes a precise reaction to ensure the stent will be placed correctly.

"Point-of-no-return" mark alerts you when recapture is no longer possible

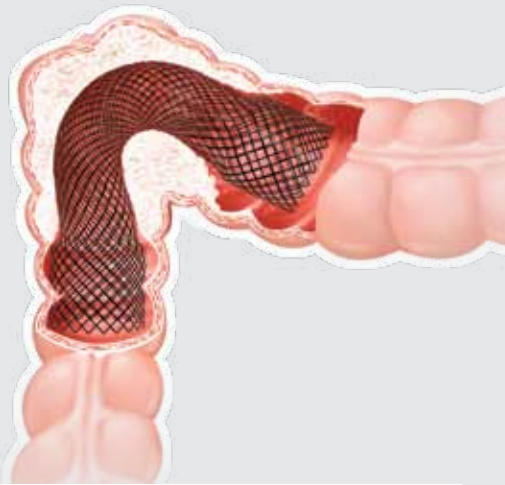
Safety wire secures the stent to the handle, ensuring stent recapturability

Directional button allows you to easily shift from deployment to recapture mode and back again

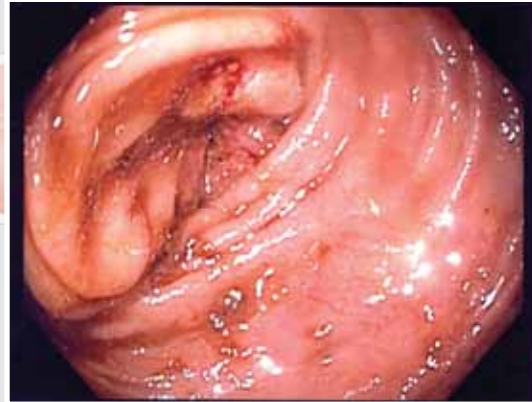


Evolutionary Security

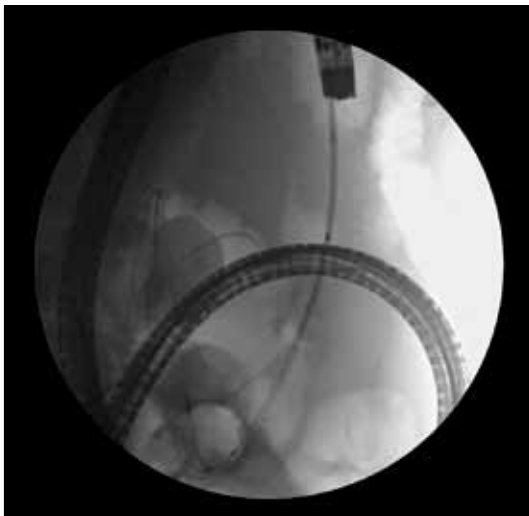
Whether you're confronting malignant strictures or relieving large bowel obstruction prior to colectomy in patients with malignancy, the Evolution Controlled-Release Stent delivers the control and maneuverability you need to confidently deliver a stent that provides better wall apposition and fully conforms to the natural curves of the anatomy while potentially reducing post-placement risks.



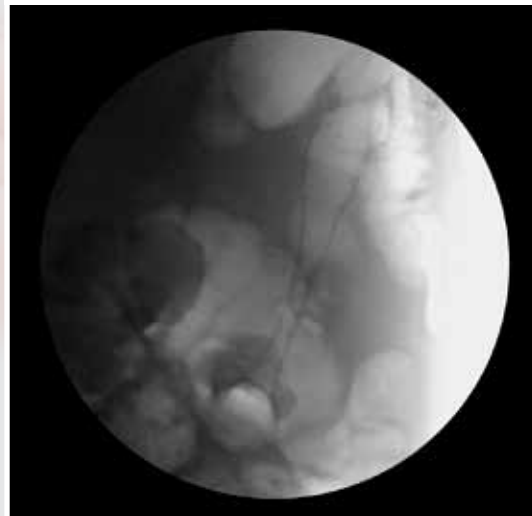
Stricture pre-stenting



Partially deployed stent



Stent position immediately after deployment



Product Specifications

Used for palliative treatment of colonic obstruction or colonic strictures caused by malignant neoplasms, and to relieve large bowel obstruction prior to colectomy in patients with malignant strictures.

Supplied sterile and is disposable - intended for single use only.

| Order Number | Reference Part Number | Body Diameter mm | Flange Diameter mm | Stent Length cm | Delivery System Fr | Delivery System Length cm |
|--------------|-----------------------|------------------|--------------------|-----------------|--------------------|---------------------------|
| G48029 | EVO-25-30-6-C | 25 | 30 | 6 | 10 | 230 |
| G48028 | EVO-25-30-8-C | 25 | 30 | 8 | 10 | 230 |
| G48038 | EVO-25-30-10-C | 25 | 30 | 10 | 10 | 230 |

Some products or part numbers may not be available in all markets. Contact your local Cook representative or Customer Service for details.

Customer Service

EMEA: EDI - www.cookmedical.com/edi.do

Distributors: +353 61239240, ssc.distributors@cookmedical.com

Austria: +43 179567121, oe.orders@cookmedical.com

Belgium: +32 27001633, be.orders@cookmedical.com

Denmark: +45 38487607, da.orders@cookmedical.com

Finland: +358 972519996, fi.orders@cookmedical.com

France: +33 171230269, fr.orders@cookmedical.com

Germany: +49 6950072804, de.orders@cookmedical.com

Hungary: +36 17779199, hu.orders@cookmedical.com

Ireland: +353 61239252, ie.orders@cookmedical.com

Italy: +39 0269682853, it.orders@cookmedical.com

Netherlands: +31 202013367, nl.orders@cookmedical.com

Norway: +47 23162968, no.orders@cookmedical.com

Spain: +34 912702691, es.orders@cookmedical.com

Sweden: +46 858769468, se.orders@cookmedical.com

Switzerland - French: +41 448009609, fr.orders@cookmedical.com

Switzerland - Italian: +41 448009609, it.orders@cookmedical.com

Switzerland - German: +41 448009609, de.orders@cookmedical.com

United Kingdom: +44 2073654183, uk.orders@cookmedical.com

www.cookmedical.com

Americas: EDI - www.cookmedical.com/edi.do

Phone: +1 812.339.2235, 800.457.4500, Fax: 800.554.8335

E-mail: orders@cookmedical.com

Australia:

Phone: +61 738411188, 1800777222, Fax: +61 738411288, 1800077283

E-mail: cau.custserv@cookmedical.com

