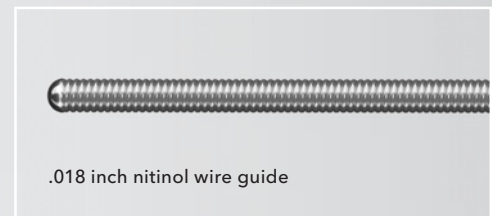
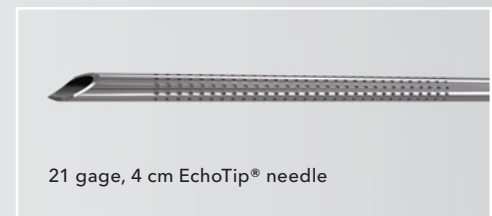
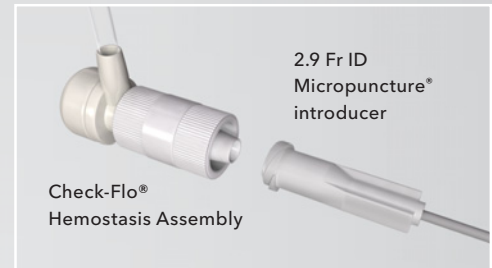
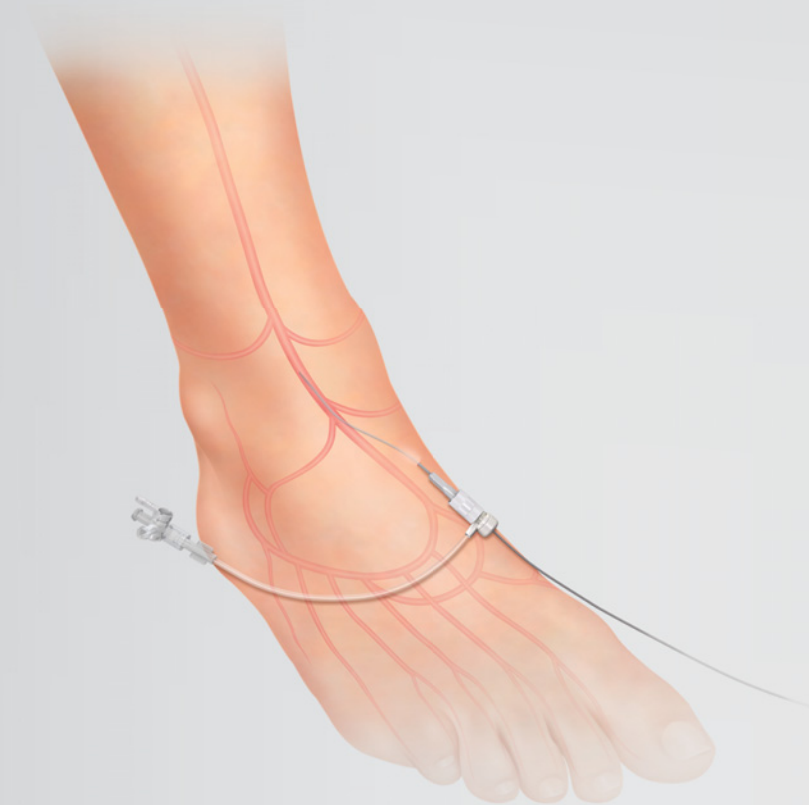


Expand your options with the first dedicated tibiopedal access set.



Micropuncture®

PEDAL ACCESS SET

Dedicated Set

The following components are designed to give you increased control while you gain retrograde infrapopliteal access:

- A 21 gage, 4 cm EchoTip® needle
- A 7 cm, 2.9 Fr ID Micropuncture introducer

Dual-Function Introducer

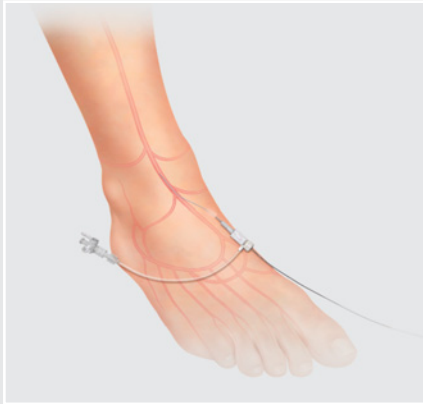
After you attach the supplied Check-Flo hemostasis valve assembly, you can pass interventional devices directly through the 2.9 Fr ID Micropuncture introducer.

Access Solution

You can complete your retrograde infrapopliteal approach with the following compatible technologies:

- Approach® CTO Microwire Guide
- Approach Hydro ST Microwire Guide
- 2.6 Fr CXI® Support Catheter





Micropuncture®

PEDAL ACCESS SET

Retrograde Infrapopliteal Approach

Infrapopliteal occlusions in patients with critical limb ischemia (CLI) are a challenge. The failure rate when taking the traditional, antegrade approach has been reported as high as nearly 40%.¹ For such patients, amputation may be the only remaining alternative. A new revascularization technique—the retrograde approach—aims to give physicians another chance at limb salvage. In cases with complex popliteal or tibioperoneal occlusions in which an initial antegrade approach failed, Montero-Baker et al. reported an 86.3% success rate² with the retrograde approach.

Order Number	Reference Part Number	Introducer OD Fr	Introducer ID Fr	Introducer Length cm	Wire Guide Diameter inch	Wire Guide Length cm	Needle gage	Needle Length cm
G02972	MPIS-401-PEDAL-NT-U-SST	4.0	2.9	7	.018	40	21	4
G02988	MPIS-501-PEDAL-NT-U-SST	5.0	2.9	7	.018	40	21	4

Some products or part numbers may not be available in all markets. Contact your local Cook representative or Customer Service for details.
Complementary products: Approach® CTO Microwire Guide, Approach Hydro ST Microwire Guide, 2.6 Fr CXI® Support Catheter.

1. Söder HK, Manninen HI, Jaakkola P, et al. Prospective trial of infrapopliteal artery balloon angioplasty for critical limb ischemia: angiographic and clinical results. *J Vasc Interv Radiol.* 2000;11(8):1021-1031.

2. Montero-Baker M, Schmidt A, Bräunlich S, et al. Retrograde approach for complex popliteal and tibioperoneal occlusions. *J Endovasc Ther.* 2008;15(5):594-604.

Customer Service

EMEA: EDI - www.cookmedical.com/edi.do
 Distributors: +353 61239240, ssc.distributors@cookmedical.com
 Austria: +43 179567121, oe.orders@cookmedical.com
 Belgium: +32 27001633, be.orders@cookmedical.com
 Denmark: +45 38487607, da.orders@cookmedical.com
 Finland: +358 972519996, fi.orders@cookmedical.com
 France: +33 171230269, fr.orders@cookmedical.com
 Germany: +49 6950072804, de.orders@cookmedical.com
 Hungary: +36 17779199, hu.orders@cookmedical.com
 Ireland: +353 61239252, ie.orders@cookmedical.com
 Italy: +39 0269682853, it.orders@cookmedical.com
 Netherlands: +31 202013367, nl.orders@cookmedical.com
 Norway: +47 23162968, no.orders@cookmedical.com
 Spain: +34 912702691, es.orders@cookmedical.com
 Sweden: +46 858769468, se.orders@cookmedical.com
 Switzerland - French: +41 448009609, fr.orders@cookmedical.com
 Switzerland - Italian: +41 448009609, it.orders@cookmedical.com
 Switzerland - German: +41 448009609, de.orders@cookmedical.com
 United Kingdom: +44 2073654183, uk.orders@cookmedical.com

www.cookmedical.com

Americas: EDI - www.cookmedical.com/edi.do
 Phone: +1 812.339.2235, 800.457.4500, Fax: 800.554.8335
 E-mail: orders@cookmedical.com

Australia:
 Phone: +61 738411188, 1800777222, Fax: +61 738411288, 1800077283
 E-mail: cau.custserv@cookmedical.com

