



BREAST LESION LOCALIZATION PRODUCTS



Rely on Cook Medical's diverse line of breast lesion localization devices to increase your procedural precision from the very start.

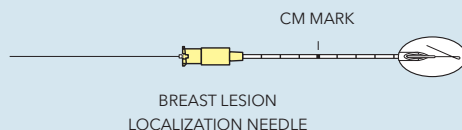


Kopans

BREAST LESION LOCALIZATION NEEDLE

Used for preoperative marking of nonpalpable breast lesions.

- Bevel-cut needle tip guides the needle to the optimum position for placing the localization hook wire.
- Reference burnish mark, when visible just outside the needle hub on the spring-hook wire, provides visual assurance that the hook wire is within the needle tip during needle manipulation.
- Needle is marked in 1 cm increments for depth guidance during a procedure.
- The reinforced tip of the spring-hook wire serves as a visual and palpable landmark for the surgeon to gauge distance to the lesion during dissection and reduces the risk of severing the hook wire.



Order Number	Reference Part Number*	Needle gage	Needle Length cm
G02586	DKBL-20-5.0-A	20	5
G02601	DKBL-20-7.0-A	20	7
G02587	DKBL-20-9.0-A	20	9
G02850	DKBL-20-15.0-A	20	15
G02900	DKBL-21-5.0-A	21	5
G03507	DKBL-21-7.0-A	21	7
G02554	DKBL-21-9.0-A	21	9
G02938	DKBL-21-15.0-A	21	15



MR eye® (MR Conditional up to 1.5 T)

G26976	IDKBL-20-7.0-A	20	7
G26977	IDKBL-20-9.0-A	20	9



EchoTip®

G04343	DKBL-20-5.0-A-U	20	5
G09984	DKBL-20-7.0-A-U	20	7
G04296	DKBL-20-9.0-A-U	20	9

*The suffix "A" on the Kopans Reference Part Number indicates the spring-hook wire has a modified reinforced tip. Not all part numbers shown on this product information sheet may be approved for sale in all regulatory jurisdictions. Consult with your local Cook representative or customer service center for details.



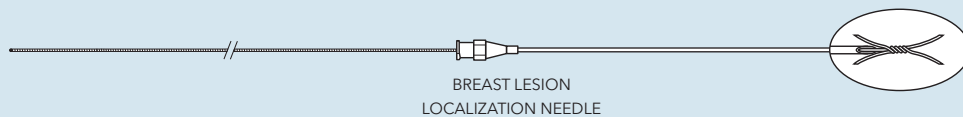
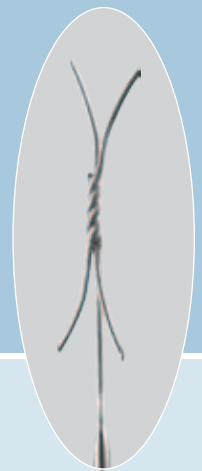


X-Reidy

BREAST LESION LOCALIZATION NEEDLE

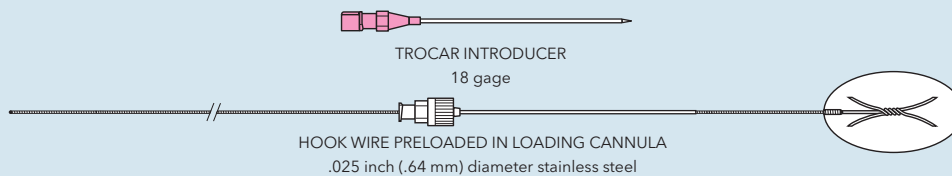
Used for preoperative marking of nonpalpable breast lesions.

- X-shaped hook provides fixation and is intended to limit migration.
- 3 cm stiff portion of the shaft is easily palpated during surgery.
- Soft, flexible wire portion of the shaft is comfortable for the patient.
- Reinforced wire facilitates surgical procedure by aiding in locating the wire and is intended to reduce the possibility of accidentally cutting the wire.



BREAST LESION LOCALIZATION NEEDLE

Order Number	Reference Part Number	Needle gage	Needle Length cm
Needles			
G19617	DXRBL-19.5-5.0-S	19.5	5
G19533	DXRBL-19.5-9.0-S	19.5	9
G19589	DXRBL-19.5-15.0-S	19.5	15



TROCAR INTRODUCER
18 gage

HOOK WIRE PRELOADED IN LOADING CANNULA
.025 inch (.64 mm) diameter stainless steel

Order Number	Reference Part Number	Needle gage	Needle Length cm
Sets (Includes Trocar Introducer)			
G19418	DXRBL-18-5.0	18	5
G19380	DXRBL-18-9.0	18	9

Not all part numbers shown on this product information sheet may be approved for sale in all regulatory jurisdictions. Consult with your local Cook representative or customer service center for details.

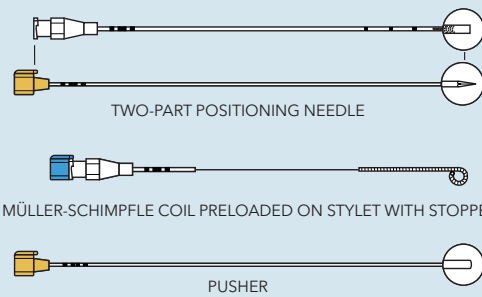
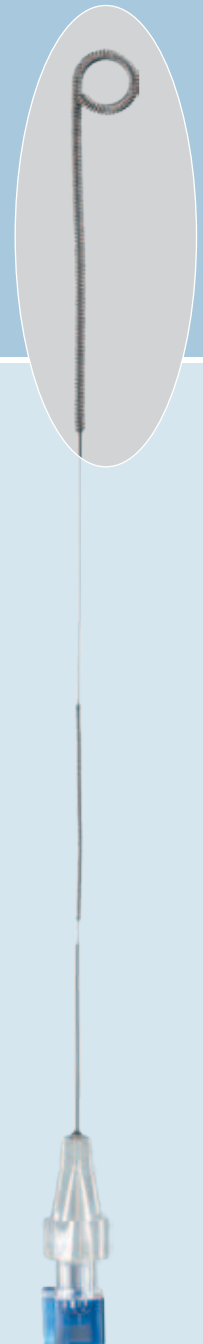




BREAST LESION LOCALIZATION COIL

Used for preoperative marking of nonpalpable breast lesions. Features the Müller-Schimpfle coil.

- EchoTip® needle ensures increased visibility during ultrasound.
- Coil acts as marker to indicate lesion location.
- MR conditional up to 3 T.



Order Number	Reference Part Number	Needle gage	Needle Length cm	Coil Diameter mm
G20782	IDLC-19.5-9.0-4-U-DM	19.5	9	4

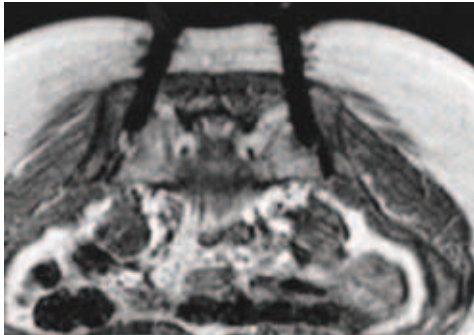
Not all part numbers shown on this product information sheet may be approved for sale in all regulatory jurisdictions. Consult with your local Cook representative or customer service center for details.

Work with precision and confidence.

Give your patients the assurance they deserve.

When your patients are counting on you for the best results possible, the tools you use can help deliver the outcome they need. Whether you're fighting cancer or localizing a benign tumor, precision and accuracy are paramount. That's why Cook Medical offers a variety of breast lesion localization needles to fit your procedural needs.

Look for the following symbols denoting specialized needle technologies:



MReye® Needles For Magnetic Resonance Imaging

Cook's interventional MReye needles are used for initial puncture and positioning control as well as for biopsies and other interventional procedures performed in combination with magnetic resonance imaging.

- MReye products are created from a non-ferromagnetic material that helps reduce artifacts by up to 1,900%.*
- MReye needles are recommended for use with MRI scanners not exceeding 3 T.



EchoTip® Needles Improved Visibility for Ultrasound

- Hundreds of microscopic dimples on the needle surface ensure a strong echo reflection.
- Our process delivers brilliant, clearly visible images of the needle tip during scanning.

*Data on file.

AORTIC INTERVENTION
CRITICAL CARE
ENDOSCOPY
INTERVENTIONAL RADIOLOGY
LEAD MANAGEMENT
PERIPHERAL INTERVENTION
SURGERY
UROLOGY
WOMEN'S HEALTH



Customer Service Centers

EMEA: EDI - www.cookmedical.com/edi.do
Distributors: +353 61239240, ssc.distributors@cookmedical.com
Austria: +43 179567121, oe.orders@cookmedical.com
Belgium: +32 27001633, be.orders@cookmedical.com
Denmark: +45 38487607, da.orders@cookmedical.com
France: +33 171230269, fr.orders@cookmedical.com
Germany: +49 6950072804, de.orders@cookmedical.com
Hungary: +36 17779199, hu.orders@cookmedical.com
Ireland: +353 61239252, ie.orders@cookmedical.com
Italy: +39 0269682853, it.orders@cookmedical.com
Netherlands: +31 202013367, nl.orders@cookmedical.com
Norway: +47 23162968, no.orders@cookmedical.com
Poland: +48 223060159, pl.orders@cookmedical.com
Spain: +34 912702691, es.orders@cookmedical.com
Sweden: +46 858769468, se.orders@cookmedical.com
Switzerland - French: +41 448009609, fr.orders@cookmedical.com
Switzerland - Italian: +41 448009609, it.orders@cookmedical.com
Switzerland - German: +41 448009609, de.orders@cookmedical.com
United Kingdom: +44 2073654183, uk.orders@cookmedical.com
www.cookmedical.com

Americas: EDI - www.cookmedical.com/edi.do
Phone: +1 812.339.2235, 800.457.4500, Fax: 800.554.8335
E-mail: orders@cookmedical.com

Australia:
Phone: +61 738411188, 1800777222, Fax: +61 738411288, 1800077283
E-mail: cau.custserv@cookmedical.com

