



Femoropopliteal

PROCEDURE GUIDE

Fight Against Disease

For nearly half a century, Cook Medical has worked shoulder to shoulder with the pioneers of peripheral medicine to deliver the technologies that advance minimally invasive healthcare.

Today we are even more focused on the fight against peripheral arterial disease (PAD) of the legs. Doing the right thing for the right reason and never compromising when it comes to patient care—that is how we move medicine forward.

PAD FACTS

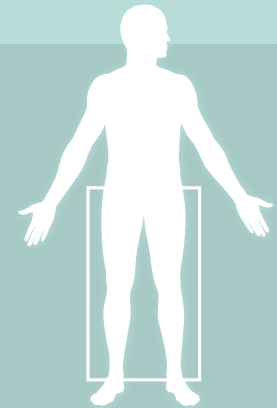
27 million people in Europe and North America suffer from PAD.¹

20% of people with PAD will suffer a nonfatal heart attack or stroke and nearly **30%** will die within 5 years.²

A potential consequence of PAD is **amputation**.

The typical life expectancy of a person after lower-limb amputation is less than **5 years**.³

Diabetes is a leading risk factor of PAD.



PAD AFFECTS

27
MILLION

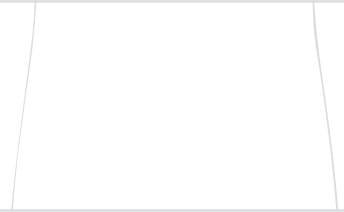
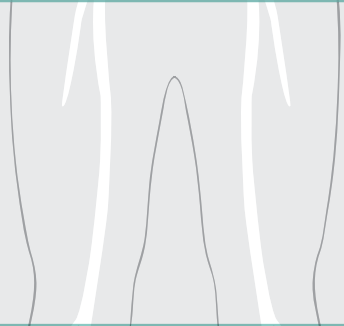
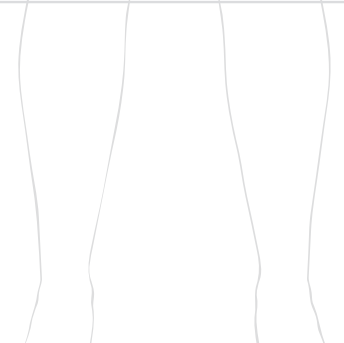
PEOPLE IN EUROPE
AND NORTH AMERICA

Advancing Leg Therapies

Cook Medical is focused on the treatment of PAD of the legs with a comprehensive line of peripheral products. In addition, our clinical trials and educational workshops are available to help you efficiently and successfully treat disease.

Your focus is on the distinct challenges each patient presents—our focus is on supporting you with solutions that increase efficiency and improve outcomes. Our goal is to be a better procedural partner by providing you with the tools you need to access, target and treat disease effectively.



		ACCESS	TARGET	TREAT
ILIAC		<p>Micropuncture INTRODUCER SETS</p> <p>Needle PERCUTANEOUS ENTRY</p> <p>Roadrunner® PC HYDROPHILIC WIRE GUIDE</p> <p>Fixed Core WIRE GUIDE</p> <p>Performer INTRODUCER SETS</p>	<p>Slip-Cath® HYDROPHILIC BEACON® TIP CATHETER</p> <p>Royal Flush® Plus BEACON TIP CATHETER</p> <p>Flexor® Ansel GUIDING SHEATH</p> <p>Flexor Raabe GUIDING SHEATH</p> <p>Flexor Balkin GUIDING SHEATH</p>	<p>Advance® 18LP PTA BALLOON</p> <p>Advance 35LP PTA BALLOON</p> <p>Zilver 518® VASCULAR STENT</p> <p>Zilver 518 RX VASCULAR STENT</p> <p>Zilver Flex™ 35 VASCULAR STENT</p>
FEMOROPLOPITEAL		<p>Micropuncture INTRODUCER SETS</p> <p>Needle PERCUTANEOUS ENTRY</p> <p>Roadrunner PC HYDROPHILIC WIRE GUIDE</p> <p>Fixed Core WIRE GUIDE</p> <p>Performer INTRODUCER SETS</p>	<p>Flexor Ansel GUIDING SHEATH</p> <p>Flexor Raabe GUIDING SHEATH</p> <p>Flexor Balkin GUIDING SHEATH</p> <p>Royal Flush Plus BEACON TIP CATHETER</p> <p>Slip-Cath HYDROPHILIC BEACON TIP CATHETER</p> <p>Approach® CTO WIRE GUIDE</p> <p>CXI® SUPPORT CATHETER</p>	<p>Advance 18LP PTA BALLOON</p> <p>Advance 35LP PTA BALLOON</p> <p>Zilver Flex 35 VASCULAR STENT</p> <p>Zilver PTX® DRUG-ELUTING PERIPHERAL STENT</p>
INFRAPOPLITEAL		<p>Micropuncture INTRODUCER SETS</p> <p>Needle PERCUTANEOUS ENTRY</p> <p>Roadrunner PC HYDROPHILIC WIRE GUIDE</p> <p>Fixed Core WIRE GUIDE</p> <p>Performer INTRODUCER SETS</p>	<p>Flexor Ansel GUIDING SHEATH</p> <p>Flexor Raabe GUIDING SHEATH</p> <p>Flexor Balkin GUIDING SHEATH</p> <p>Shuttle® Tibial INFRAPOPLITEAL ACCESS SYSTEM</p> <p>Slip-Cath HYDROPHILIC BEACON TIP CATHETER</p> <p>Approach Hydro ST WIRE GUIDE</p> <p>Approach CTO WIRE GUIDE</p> <p>CXI SUPPORT CATHETER</p>	<p>Advance 14LP PTA BALLOON</p>

FEMOROPLOPLITEAL SYSTEM

These Cook Medical devices were designed to work together to provide solutions to treat femoropopliteal lesions based on physician preference and patient need. Our peripheral-specific devices are engineered to help you safely access, **target and treat** femoropopliteal disease and improve patient outcomes.

1

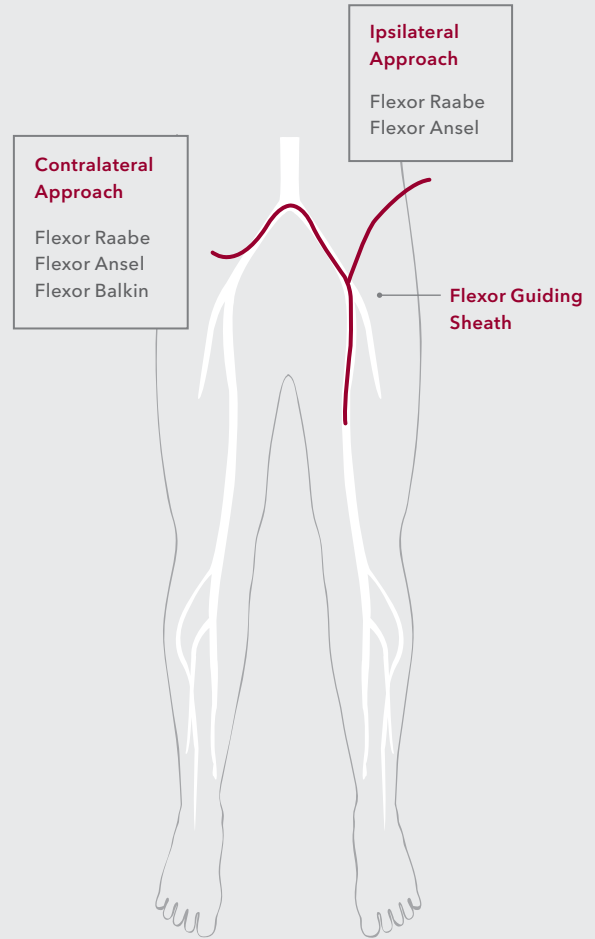
ACCESS



Gain access for femoropopliteal procedures with Micropuncture Introducer Sets.

2

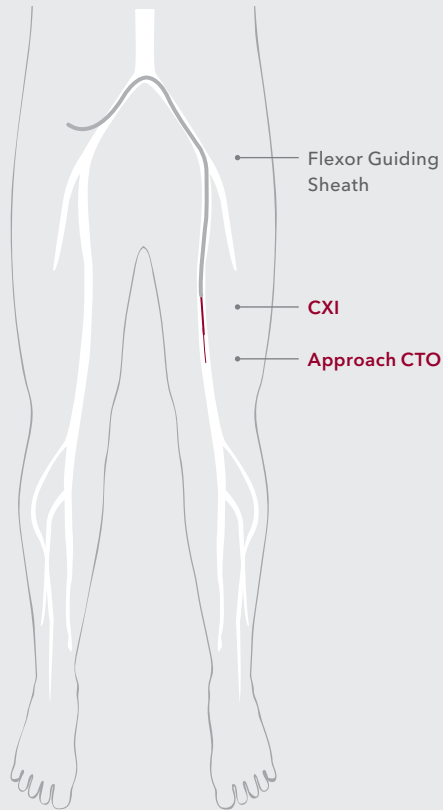
TARGET



Target the lesion with a contralateral or ipsilateral approach using our Flexor Raabe or Flexor Ansel guiding sheaths.

3

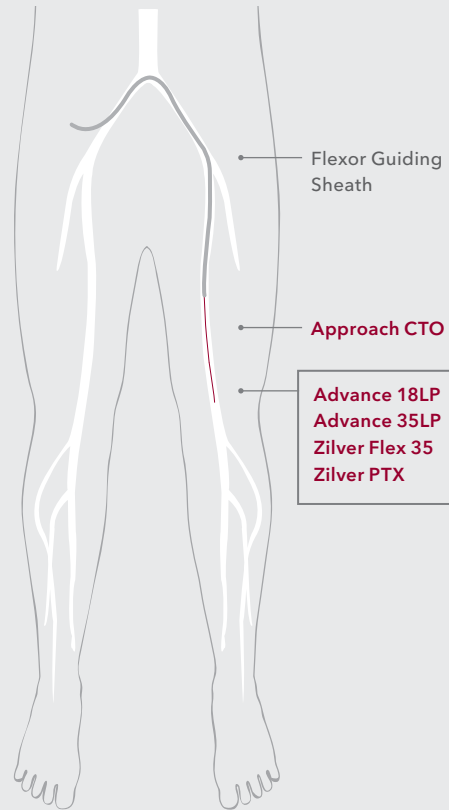
CROSS THE LESION TARGET



When crossing lesions, Flexor Guiding Sheaths provide support for the Approach CTO microwire, allowing you to cross and reach the lesion.

4

TREAT



For treatment of femoropopliteal lesions choose from the Advance 18LP or Advance 35LP PTA balloons, the Zilver Flex 35 vascular stent or the drug-eluting Zilver PTX self-expanding stent.

ACCESS

Choosing the right minimally invasive vascular access products is a crucial step in your interventional procedure. You need options that address the differences in each patient's anatomy and your own procedural preferences.

Cook Medical's broad line of access products is designed to give you those options. Minimize access-site bleeding complications⁴ and maximize procedural success.

Experience **ultra-smooth insertion**
with our Silhouette® Transitionless™ tip.



Micropuncture®

INTRODUCER SET

FEWER COMPLICATIONS

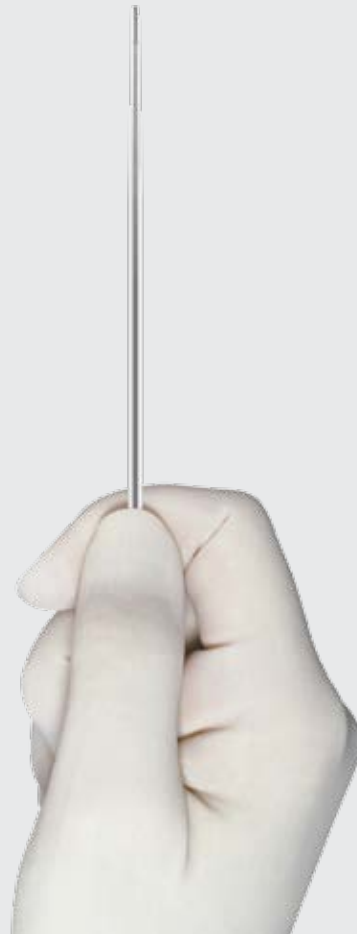
In a study by Shah et al., access-site bleeding complication rates dropped from 11.7% to 2.6% when Micropuncture was used.⁴

SHARP AND SMOOTH

All sets feature Cook's renowned needles. The introducer's Silhouette Transitionless tip has been engineered to glide into the vessel.

MORE OPTIONS

Choose from 4 and 5 Fr catheters, stainless steel or nitinol wires, EchoTip® needles for ultrasound visualization, and Push-Plus™ stiffened cannulas for difficult-vessel entry.



ACCESS

TARGET

TREAT

FEWER COMPLICATIONS⁴

TRANSITIONLESS TIP

Bleeding Complication Rates⁴

	Micropuncture Needle	18 gage Needle	P Value
Total	2.6%	11.7%	< 0.01
Major	0%	2.8%	

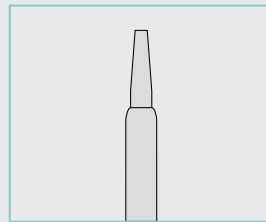
Helping Doctors Help Patients

Micropuncture introducers with the Silhouette Transitionless tip are more than just easy to use—they can be safer and less traumatic for your patients. In a study by Shah et al.,⁴ access-site bleeding complication rates dropped dramatically for patients who used 21 gage Micropuncture as compared to standard 18 gage needles. In this case, subjects reported 78% fewer complications.

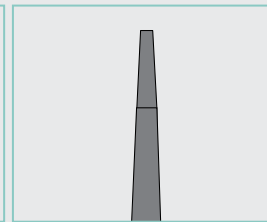
Leading the Way, Again

Most introducers have an abrupt drop-off between shaft and tip. When this “shelf” gets caught on the skin, introduction becomes more difficult and the likelihood of trauma (and complications) increases.

Micropuncture introducers with the Silhouette Transitionless tip are different. In addition to its smaller diameter, the tip features a smooth shaft-to-tip transition that virtually eliminates hang-ups. Add to that sharp needles and the widest line of products and you have the ultimate micro-access package.



Standard



Silhouette Transitionless

ACCESS

TARGET

TREAT

TARGET

When navigating through tortuous anatomy, you need every advantage—and Cook Medical products are up to the challenge. Designed to be highly visible and highly maneuverable, our low-profile products provide the pushability, trackability and kink resistance that get you to your destination.

Plus, they're available in the sizes, shapes and configurations you need for treating your patients. Confidently advance to your target while minimizing your procedure time. Cook products will get you there.

Target any vessel with confidence.

Flexor[®] Technology

GUIDING SHEATHS

TRACKABILITY AND CHOICE

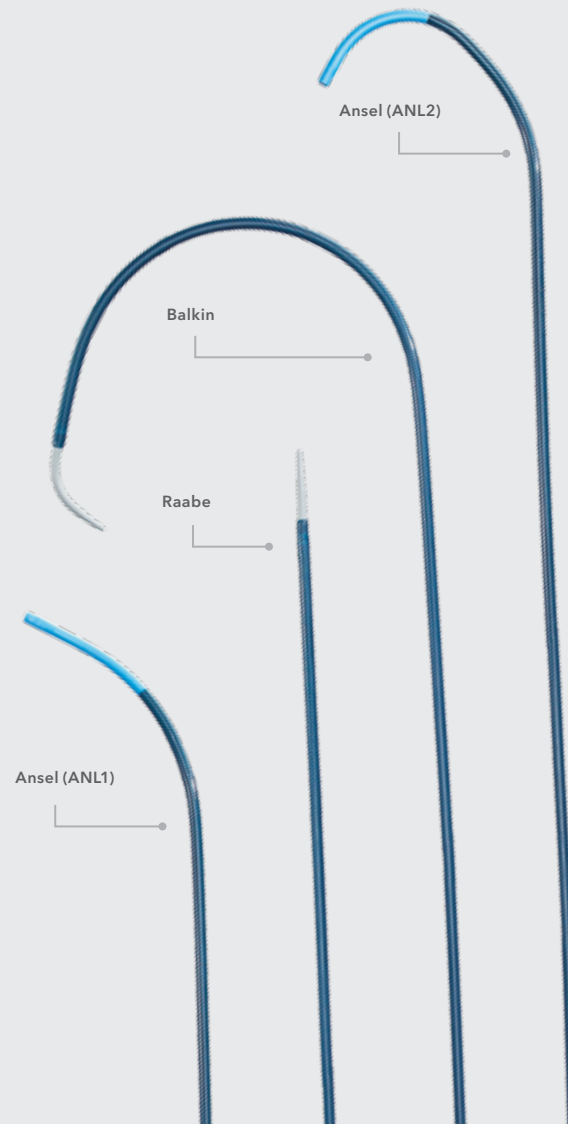
The **Flexor Ansel** offers gentle curves, a soft tip and a hydrophilic coating, which enhance trackability, while .018" and .038" compatible dilators provide choice in platform.

VERSATILITY

The straight configuration of the **Flexor Raabe** sheath provides a platform able to meet your procedural needs.

DEPENDABLE

The **Flexor Balkin** has a 180° curve that anchors across the bifurcation to stabilize your contralateral access.



ACCESS

TARGET

TREAT

Enhance visibility and reduce insertion force
in all of your procedures.

Slip-Cath[®]

DIAGNOSTIC CATHETERS

EASE OF INSERTION

Slip-Cath's hydrophilic coating and tapered tip slide easily into selected vessels with minimal force.

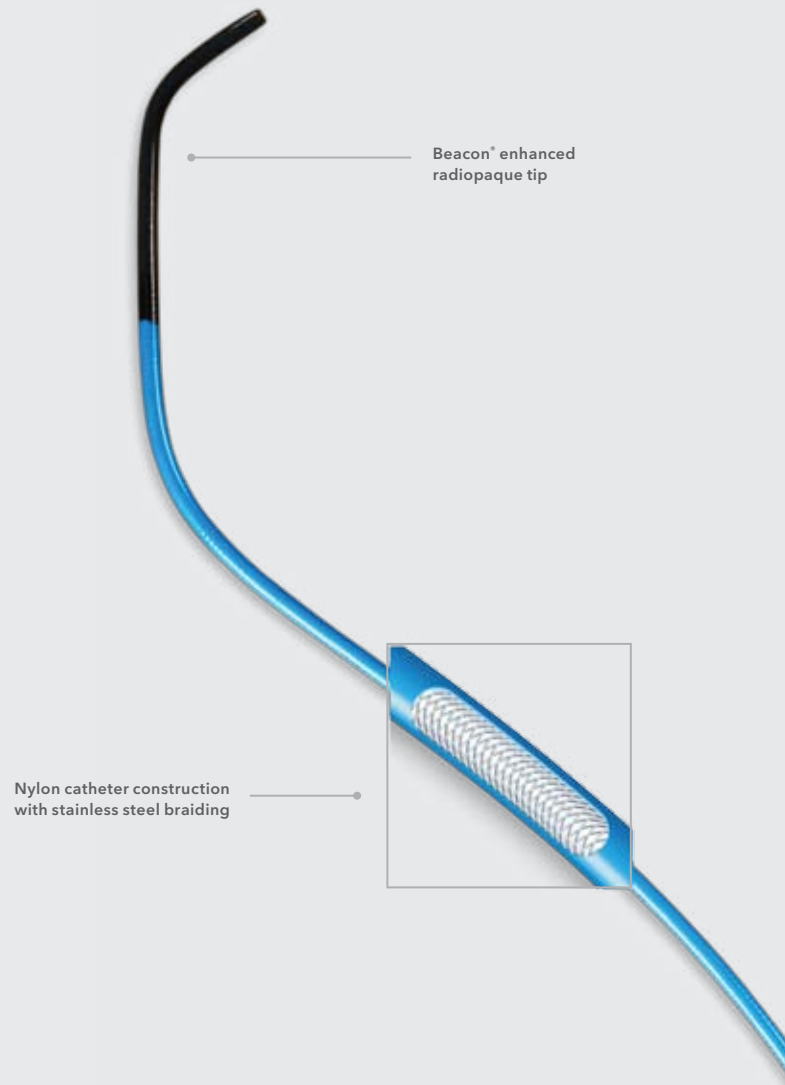
SUPERIOR VISUALIZATION

Cook's Beacon enhanced radiopaque tip technology ensures excellent visibility during catheter manipulation.

SUPERIOR KINK RESISTANCE

Braided stainless steel construction from hub to tip provides maximum control and pushability—minimizing kinking in tight curves.

French/Diameters		
.038" 0.96 mm	.055" 1.40 mm	.066" 1.68 mm
.027" 0.69 mm	.042" 1.07 mm	.042" 1.07 mm
3 Fr	4 Fr	5 Fr



ACCESS

TARGET

TREAT

Reach and cross lesions with the **support catheter** engineered for the periphery.

CXI™

SUPPORT CATHETER

DEPENDABLE TRACKABILITY

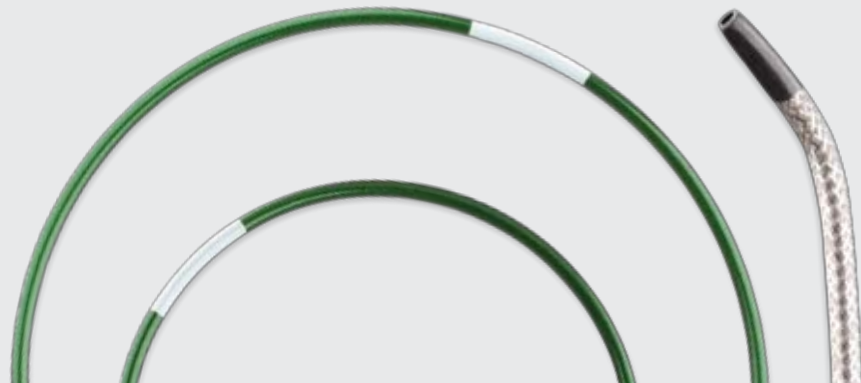
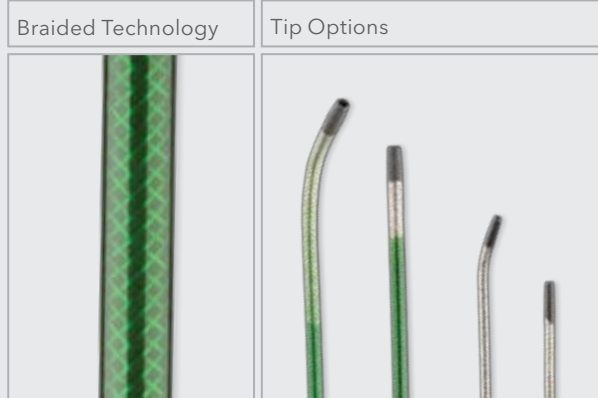
Low profile from tip to hub ensures smooth transition through small vasculature. Shaft's polymer material offers desired flexibility.

EXCEPTIONAL PUSHABILITY

Braided stainless steel construction along entire length provides exceptional pushability. Hydrophilic coating eases your way through tortuous anatomy.

ENHANCED VISIBILITY

Embedded radiopaque bands allow you to size the vessel segment length. Depth markers clearly show progression into the sheath.



ACCESS

TARGET

TREAT

Break through challenging lesions with new microwire technology.

Approach[®] CTO

MICROWIRE GUIDE

TIP STIFFNESS OPTIONS

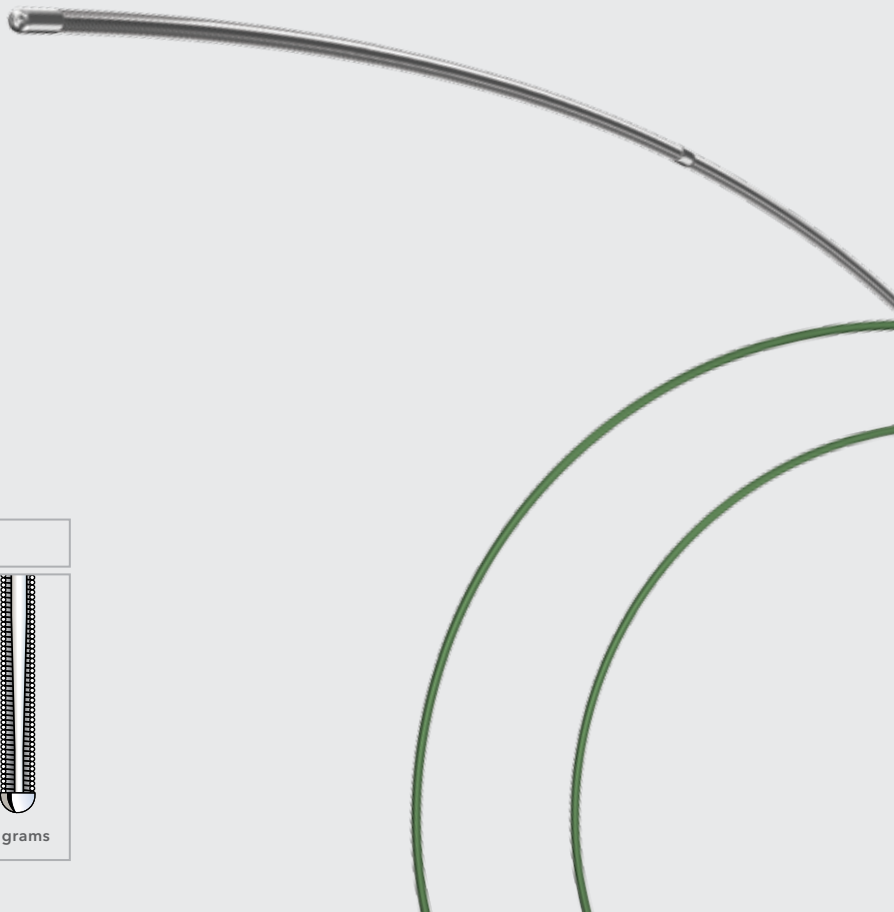
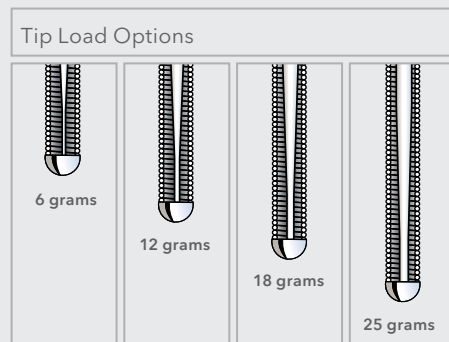
Wide selection of tip loads for crossing challenging lesions: 6, 12, 18 and 25 grams.

SHORTER TAPER

Shorter taper provides enhanced pushability and penetration power by focusing the force on the tip.

SUPPORTIVE SHAFT

Supportive stainless steel mandril helps navigate support catheters smoothly through the vessel.



ACCESS

TARGET

TREAT

TREAT

As an interventionalist, you have a strategy to deal with every possible turn of events during an interventional procedure. You plan, you anticipate, you prepare. The success of each procedure you undertake depends upon your skill and the quality of the products you use.

Your patient outcomes improve when you choose products whose performance is reliable. You can depend on Cook Medical: proven products, predictable results, positive outcomes.

Cross lesions like never before.

Advance® 18LP

LOW PROFILE PTA BALLOON DILATATION CATHETER

LOW PROFILE

Cross lesions easily with a low balloon profile and robust pushability. Super-flexible tip maneuvers easily through tortuous vasculature.

RAPID INFLATION/DEFLATION

Optimized balloon inflation time expedites your procedure, and advanced rewrap technology provides fast balloon deflation for quick restoration of blood flow.



ACCESS

TARGET

TREAT

Rely on the next-generation stent with clinically proven fracture resistance.

Zilver Flex™ 35

VASCULAR SELF-EXPANDING STENT

STABLE DEPLOYMENT

Linear-cell stent design ensures stable on-target deployment.

FRACTURE RESISTANT SURFACE

Electropolished to Cook's industry-leading standards, eliminating the imperfections that can lead to stent fractures.

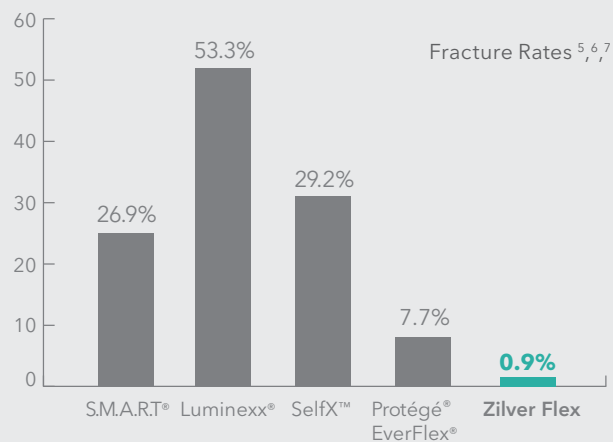
SFA BALANCED DESIGN

Strength and flexibility balanced specifically for the SFA ensures exceptional durability.

PROVEN DURABILITY

The 12-month fracture rate of this stent was just 0.9% in a core lab adjudicated clinical trial.⁵

Linear Cell Stent Design



ACCESS

TARGET

TREAT

Pass an 8 mm x 8 cm balloon through a 5 Fr sheath.

Advance[®] 35LP

LOW PROFILE PTA BALLOON DILATATION CATHETER

PIONEERING REWRAP TECHNOLOGY

Starcast™ shoulders provide superior sheath compatibility and sheath reinsertion abilities.

TEXTURED BALLOON SURFACE

Pliaform™ technology reduces surface friction. Combined with the lowest crossing profile, it eases crossing of lesions.

SUPERIOR SHAFT TECHNOLOGY

Cook's D-shaped lumen design ensures rapid deflation while maintaining superb pushability and trackability.



ACCESS

TARGET

TREAT



LABORATORY TESTING*

*Data on file.

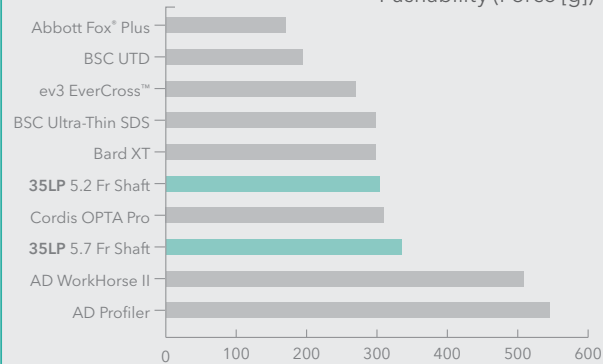
Expand your procedural options
with products that perform.

Pushability. Objective: To assess the balloon catheter's ability to deliver the maximum amount of force to the distal end of the catheter when resistance is encountered.

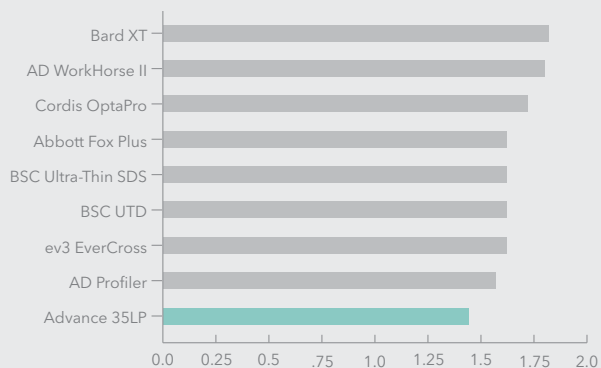
Crossing Profile. Objective: To measure the distal section of the balloon to assess the profile when crossing a lesion.

Flow Rates. Objective: To measure the rate at which the fluid moves through the catheter, yielding inflation and deflation time of the balloon.

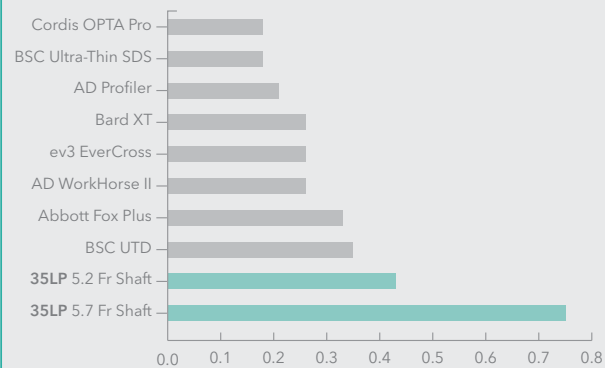
Pushability (Force [g])



Crossing Profile (mm)



Flow Rates (mL/s)



ACCESS

TARGET

TREAT



Reduce your SFA restenosis rate by 50% with this combination therapy device.

SUPERIOR SFA RESULTS

Zilver® PTX®

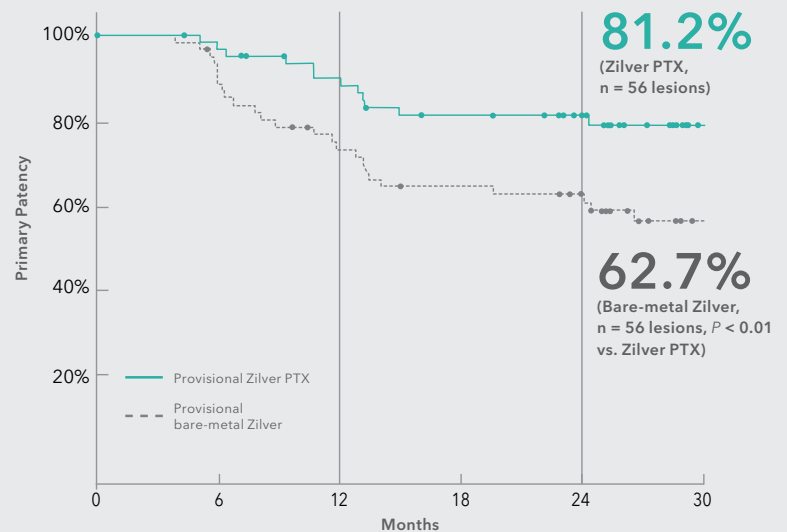
DRUG-ELUTING PERIPHERAL STENT

Zilver PTX combines the benefits of both mechanical and drug therapies, creating an effective treatment no single therapy can match.



This **combination therapy** has been proven in complementary randomized and single-arm clinical trials. The randomized trial proves Zilver® PTX® achieves a 50% reduction in restenosis at two years compared with bare-metal stenting.⁵

24-Month Paclitaxel Effect-Patency (PSVR < 2.0)



Provisional Group	24-month restenosis	
	Rate	Reduction
Zilver PTX	18.8%	50%
Bare Zilver	37.3%	

ACCESS

TARGET

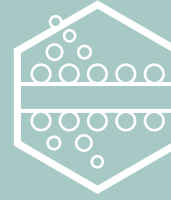
TREAT



NEXT-GENERATION DURABLE DESIGN

The **mechanical therapy** provided by Zilver PTX counteracts acute recoil to maintain patency. The 12-month fracture rate of this stent was just 0.9% in a core lab adjudicated clinical trial.⁵

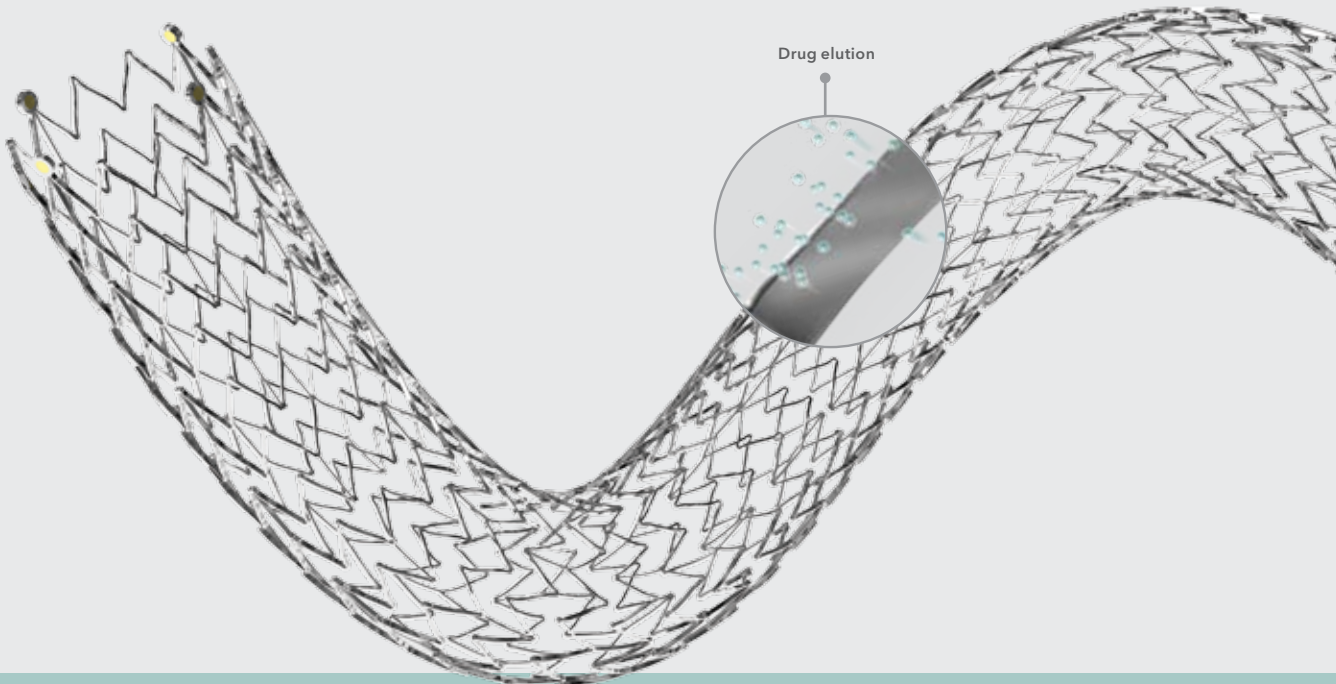
1. **Linear-cell stent design** delivers stable on-target deployment.
2. **Meticulous electropolishing** provides superior fracture resistance.
3. **Strength and flexibility** are balanced for exceptional stent durability in the dynamic anatomy of the SFA.



POLYMER-FREE PACLITAXEL DELIVERY

Zilver PTX's **drug therapy** prevents cell proliferation for the life of the cell—while eliminating the risk associated with polymers.

1. PTX is **hydrophobic**, so wash-off is minimal.
2. Because PTX is also **lipophilic**, it attaches to the lipids in the vessel wall.
3. Angioplasty can cause vessel trauma that leads to cell division and restenosis. PTX is **antiproliferative**, blocking this cell division to maintain patency.



ACCESS

TARGET

TREAT

References

1. Belch JJ, Topol EJ, Agnelli G, et al. Critical issues in peripheral arterial disease detection and management: a call to action. *Arch Intern Med.* 2003;163(8):884-892.
2. Creager M. PAD: The science base for messages. Presented at: NHLBI Workshop on Peripheral Arterial Disease (PAD): Developing a Public Awareness Campaign; January 15, 2003; Bethesda, MA.
3. Amputations facts. Save a Leg, Save a Life Foundation website. <http://www.savealegsavelife.com>. Accessed November 4, 2009.
4. Shah H, Bansal A, Srinivasan V, et al. Vascular access site bleeding complications with Micropuncture needle in patients undergoing cardiac catheterization: a comparison with conventional Cook needle. Poster presented at: The Society for Cardiovascular Angiography and Interventions 29th Annual Scientific Sessions; May 10-13, 2006; Chicago, IL. Abstract D-45.
5. Dake M. The Zilver PTX randomized trial of paclitaxel-eluting stents for femoropopliteal disease: 24-month update. Presented at: LINC 2011; January 19, 2011; Leipzig, Germany.
6. Scheinert D, Scheinert S, Sax J, et al. Prevalence and clinical impact of stent fractures after femoropopliteal stenting. *J Am Coll Cardiol.* 2005;45(2):312-315.
7. Bosiers M, Torsello G, Gissler HM, et al. Nitinol stent implantation in long superficial femoral artery lesions: 12-month results of the DURABILITY I study. *J Endovasc Ther.* 2009;16(3):261-269.

S.M.A.R.T. and OPTA are registered trademarks of Cordis Corporation. Luminexx and LifeStent are registered trademarks of C.R. Bard, Inc. SelfX is a trademark of Jomed GmbH. Protégé and EverFlex are registered trademarks of ev3 Peripheral, Inc. Bard XT is a trademark of BCR, Inc. Profiler and WorkHorse are registered trademarks of AngioDynamics, Inc. Fox is a registered trademark of Abbott Laboratories. EverCross is a trademark of ev3 Peripheral, Inc.

CLINICAL CASE STUDIES

Revascularization of Superficial Femoral Artery: Case I

Using Zilver PTX

PATIENT

Male patient, 58 years old, heavy smoker, with hypertension.

PROCEDURE

CTA reported an obstruction in the distal tract of the superficial femoral artery, but distal recovery was evident thanks to a collateral bloodstream originating from the deep femoral artery.

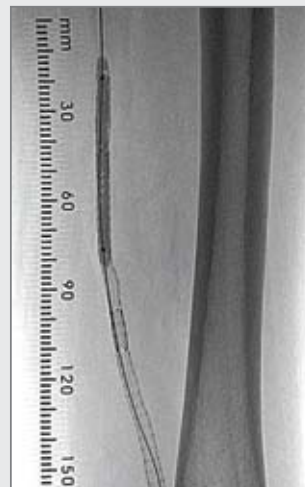
Through contralateral femoral access with crossover technique, a 7 Fr Flexor braided introducer (Cook) was advanced at the level of the origin of the SFA. A DSA was performed and it confirmed distal SFA obstruction. Below the knee, the blood flow was slow but basically preserved for the presence of a patent peroneal artery.

Recanalization of the obstructed segment was achieved using a 4 Fr straight angiographic catheter in combination with a .035 inch hydrophilic guidewire, angled tip (Terumo).

Three metallic drug-eluting Zilver PTX (6 x 80, 6 x 80 and 6 x 40 mm) stents were positioned and dilated with a 6 mm balloon catheter.

The final angio highlighted the vessel recanalization and a remarkable increase in the leg distal flow.

US color Doppler, performed after 1 month, showed the stent patency.



Revascularization of Superficial Femoral Artery: Case II

Using Zilver PTX

PATIENT

Female patient, 56 years old, heavy smoker, suffering from diabetes, hypertension and hypercholesterolemia.

PROCEDURE

In May 2006 the patient was treated for a preocclusive stenosis of the right superficial femoral artery through placement of a 7 x 60 mm S.M.A.R.T. (Cordis) metallic stent.

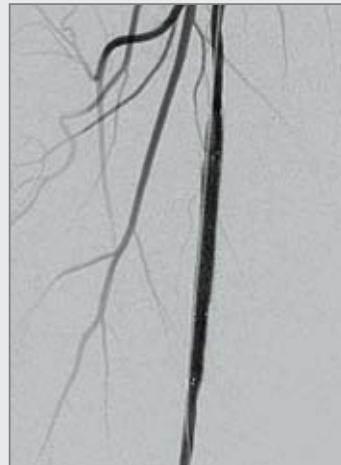
The patient's clinical conditions steadily improved, but after six months a right claudication reappeared and progressively worsened.

In July 2007, patient's clinical conditions worsened with 100 meters claudication. A US color Doppler and a CTA highlighted an intrastent restenosis confirmed at a diagnostic angiography.

The distal flow, below the knee, was slow but basically still good for the presence of two-vessel runoff.

A PTA with a 5 mm cutting balloon was performed, and the blood flow within the stent became partially better.

A 7 mm x 8 cm Zilver PTX stent was positioned within the previous stent, and the intrastent stenosis was completely overcome. The distal flow evidently improved. US color Doppler performed at 1 year follow-up confirmed the stent patency.



These images have been provided by the courtesy of the Vascular and Interventional Radiology Unit, Department of Radiological Sciences, Sapienza University of Rome

Ordering Information

Micropuncture®

INTRODUCER SETS

Order Number	Reference Part Number
.018 inch Nitinol Wire Guide – Standard Cannula	
G47942	MPIS-401-NT-SST
G47944	MPIS-401-NT-U-SST
G43870	MPIS-501-NT-SST
G43871	MPIS-501-NT-U-SST
.018 inch Stainless Steel Wire Guide – Standard Cannula	
G47949	MPIS-401-U-SST
G47950	MPIS-405-SST
G43869	MPIS-501-U-SST
G43872	MPIS-505-SST
.018 inch Nitinol Wire Guide – Stiffened Cannula	
G48003	MPIS-401-10.0-SC-NT-SST
G48004	MPIS-401-10.0-SC-NT-U-SST
G48007	MPIS-501-10.0-SC-NT-SST
G48008	MPIS-501-10.0-SC-NT-U-SST
G48005	MPIS-501-15.0-SC-NT-SST

ACCESS

TARGET

TREAT

Ordering Information

Flexor®

GUIDING SHEATHS

Order Number	Reference Part Number
Flexor Ansel – Check-Flo® Valve	
G48186	KCFW-4.0-18/35-45-RB-ANL0-HC
G48188	KCFW-4.0-18/35-90-RB-ANL0-HC
G44153	KCFW-5.0-18/38-45-RB-ANL0-HC
G48189	KCFW-5.0-18/38-90-RB-ANL0-HC
G29988	KCFW-5.0-18/38-90-RB-ANL1-HC
G36331	KCFW-5.0-18/38-90-RB-ANL2-HC
G44154	KCFW-6.0-18/38-45-RB-ANL0-HC
G29989	KCFW-6.0-18/38-90-RB-ANL1-HC
G29990	KCFW-6.0-18/38-90-RB-ANL2-HC
Flexor Balkin – Check-Flo Valve	
G12656	KCFW-5.5-38-40-RB-BLKN
G32208	KCFW-5.5-38-40-RB-BLKN-HC
G10383	KCFW-6.0-38-40-RB-BLKN
G32224	KCFW-6.0-38-40-RB-BLKN-HC
Flexor Ansel – Tuohy-Borst Valve	
G29995	KSAW-5.0-18/38-55-RB-ANL1-HC
G30120	KSAW-5.0-18/38-55-RB-ANL2-HC
G29996	KSAW-6.0-18/38-55-RB-ANL1-HC
G29997	KSAW-6.0-18/38-55-RB-ANL2-HC
Flexor Raabe – Check-Flo Valve	
G48187	KCFW-4.0-35-55-RB-RAABE
G13009	KCFW-5.0-38-55-RB-RAABE
G11638	KCFW-6.0-38-55-RB-RAABE
G13091	KCFW-5.0-38-70-RB-RAABE
G11636	KCFW-6.0-38-70-RB-RAABE
G13069	KCFW-5.0-38-90-RB-RAABE
G12266	KCFW-6.0-38-90-RB-RAABE

CXI™

SUPPORT CATHETERS

Order Number	Reference Part Number
G50002	CXI-2.6-18-90-P-NS-ANG
G50001	CXI-2.6-18-150-P-NS-0
G50004	CXI-2.6-18-90-P-NS-0
G50003	CXI-2.6-18-150-P-NS-ANG
G52546	CXI-4.0-35-90-P-NS-0
G52547	CXI-4.0-35-90-P-NS-DAV
G52542	CXI-4.0-35-135-P-NS-0
G52543	CXI-4.0-35-135-P-NS-DAV
G52544	CXI-4.0-35-150-P-NS-0
G52545	CXI-4.0-35-150-P-NS-DAV

Approach® CTO

MICROWIRE WIRE GUIDES

Order Number	Reference Part Number
G50782	CMW-14-135-6G
G50783	CMW-14-135-12G
G50784	CMW-14-135-18G
G50785	CMW-14-135-25G
G50786	CMW-14-190-6G
G50787	CMW-14-190-12G
G50788	CMW-14-190-18G
G50789	CMW-14-190-25G
G50790	CMW-14-300-6G
G50791	CMW-14-300-12G
G50792	CMW-14-300-18G
G50793	CMW-14-300-25G

ACCESS

TARGET

TREAT

Ordering Information

Advance® 18LP

LOW-PROFILE PTA BALLOON DILATATION CATHETERS

Order Number	Reference Part Number
.018 inch Wire Guide – 80 cm Shaft	
G50215	PTA4-18-80-3-2
G50217	PTA4-18-80-3-4
G50219	PTA4-18-80-3-6
G50221	PTA4-18-80-3-8
G50223	PTA4-18-80-3-10
G50225	PTA4-18-80-4-2
G50227	PTA4-18-80-4-4
G50229	PTA4-18-80-4-6
G50231	PTA4-18-80-4-8
G50232	PTA4-18-80-4-10
G50234	PTA4-18-80-5-2
G50236	PTA4-18-80-5-4
G50238	PTA4-18-80-5-6
G50240	PTA4-18-80-5-8
G50242	PTA4-18-80-5-10
G50244	PTA4-18-80-6-2
G50246	PTA4-18-80-6-4
G50248	PTA4-18-80-6-6
G50250	PTA4-18-80-6-8
G50252	PTA4-18-80-6-10
G50254	PTA4-18-80-7-2
G50256	PTA4-18-80-7-4
G50258	PTA4-18-80-7-6
G50260	PTA4-18-80-7-8
G50263	PTA4-18-80-7-10
G50265	PTA4-18-80-8-2
G50267	PTA4-18-80-8-4
G50269	PTA4-18-80-8-6
G50271	PTA4-18-80-8-8
G50273	PTA4-18-80-8-10

Advance® 18LP

LOW-PROFILE PTA BALLOON DILATATION CATHETERS

Order Number	Reference Part Number
.018 inch Wire Guide – 135 cm Shaft	
G50216	PTA4-18-135-3-2
G50218	PTA4-18-135-3-4
G50220	PTA4-18-135-3-6
G50222	PTA4-18-135-3-8
G50224	PTA4-18-135-3-10
G50226	PTA4-18-135-4-2
G50228	PTA4-18-135-4-4
G50230	PTA4-18-135-4-6
G49479	PTA4-18-135-4-8
G50233	PTA4-18-135-4-10
G50235	PTA4-18-135-5-2
G50237	PTA4-18-135-5-4
G50239	PTA4-18-135-5-6
G50241	PTA4-18-135-5-8
G50243	PTA4-18-135-5-10
G50245	PTA4-18-135-6-2
G50247	PTA4-18-135-6-4
G50249	PTA4-18-135-6-6
G50251	PTA4-18-135-6-8
G50253	PTA4-18-135-6-10
G50255	PTA4-18-135-7-2
G50257	PTA4-18-135-7-4
G50259	PTA4-18-135-7-6
G50262	PTA4-18-135-7-8
G50264	PTA4-18-135-7-10
G50266	PTA4-18-135-8-2
G50268	PTA4-18-135-8-4
G50270	PTA4-18-135-8-6
G50272	PTA4-18-135-8-8
G50274	PTA4-18-135-8-10

ACCESS

TARGET

TREAT

Ordering Information

Advance® 35LP

LOW-PROFILE PTA BALLOON DILATATION CATHETERS

Order Number	Reference Part Number
.035 inch Wire Guide – 80 cm Shaft	
G52325	PTA5-35-80-3-2.0
G52326	PTA5-35-80-3-4.0
G52327	PTA5-35-80-3-8.0
G52328	PTA5-35-80-3-10.0
G52329	PTA5-35-80-3-12.0
G52330	PTA5-35-80-3-14.0
G52331	PTA5-35-80-4-2.0
G52332	PTA5-35-80-4-4.0
G52333	PTA5-35-80-4-8.0
G52334	PTA5-35-80-4-10.0
G52335	PTA5-35-80-4-12.0
G52336	PTA5-35-80-4-14.0
G52337	PTA5-35-80-5-2.0
G52338	PTA5-35-80-5-4.0
G52339	PTA5-35-80-5-6.0
G52340	PTA5-35-80-5-8.0
G52341	PTA5-35-80-5-10.0
G52342	PTA5-35-80-5-12.0
G52343	PTA5-35-80-5-14.0
G52344	PTA5-35-80-6-2.0
G52345	PTA5-35-80-6-4.0
G52346	PTA5-35-80-6-6.0
G52347	PTA5-35-80-6-8.0
G52348	PTA5-35-80-6-10.0
G52349	PTA5-35-80-6-12.0
G52350	PTA5-35-80-6-14.0
G52351	PTA5-35-80-7-2.0
G52352	PTA5-35-80-7-4.0
G52353	PTA5-35-80-7-6.0
G52354	PTA5-35-80-7-8.0

Advance® 35LP

LOW-PROFILE PTA BALLOON DILATATION CATHETERS

Order Number	Reference Part Number
.035 inch Wire Guide – 80 cm Shaft	
G52355	PTA5-35-80-7-10.0
G52356	PTA5-35-80-7-12.0
G52357	PTA5-35-80-7-14.0
G52358	PTA5-35-80-8-2.0
G52359	PTA5-35-80-8-4.0
G52360	PTA5-35-80-8-6.0
G52361	PTA5-35-80-8-8.0
G52362	PTA5-35-80-8-10.0
G52363	PTA5-35-80-8-12.0
G52364	PTA5-35-80-8-14.0
G52365	PTA5-35-80-9-3.0
G52366	PTA5-35-80-9-4.0
G52367	PTA5-35-80-9-6.0
G52368	PTA5-35-80-9-8.0
G52369	PTA5-35-80-9-10.0
G52370	PTA5-35-80-9-12.0
G52371	PTA5-35-80-9-14.0
G52372	PTA5-35-80-10-3.0
G52373	PTA5-35-80-10-4.0
G52374	PTA5-35-80-10-6.0
G52375	PTA5-35-80-10-8.0
G52376	PTA5-35-80-10-10.0
G52377	PTA5-35-80-10-12.0
G52378	PTA5-35-80-10-14.0
G52379	PTA5-35-80-12-4.0
G52380	PTA5-35-80-12-8.0
G52381	PTA5-35-80-12-10.0
G52382	PTA5-35-80-12-12.0
G52383	PTA5-35-80-12-14.0

ACCESS

TARGET

TREAT

Ordering Information

Advance® 35LP

LOW-PROFILE PTA BALLOON DILATATION CATHETERS

Order Number	Reference Part Number
.035 inch Wire Guide – 135 cm Shaft	
G52245	PTA5-35-135-3-2.0
G52246	PTA5-35-135-3-4.0
G52247	PTA5-35-135-3-8.0
G52248	PTA5-35-135-3-10.0
G52249	PTA5-35-135-3-12.0
G52250	PTA5-35-135-3-14.0
G52251	PTA5-35-135-4-2.0
G52252	PTA5-35-135-4-4.0
G52253	PTA5-35-135-4-8.0
G52254	PTA5-35-135-4-10.0
G52255	PTA5-35-135-4-12.0
G52256	PTA5-35-135-4-14.0
G52257	PTA5-35-135-5-2.0
G52258	PTA5-35-135-5-4.0
G52259	PTA5-35-135-5-6.0
G52260	PTA5-35-135-5-8.0
G52261	PTA5-35-135-5-10.0
G52262	PTA5-35-135-5-12.0
G52263	PTA5-35-135-5-14.0
G52264	PTA5-35-135-6-2.0
G52265	PTA5-35-135-6-4.0
G52266	PTA5-35-135-6-6.0
G52267	PTA5-35-135-6-8.0
G52268	PTA5-35-135-6-10.0
G52269	PTA5-35-135-6-12.0
G52270	PTA5-35-135-6-14.0
G52271	PTA5-35-135-7-2.0
G52272	PTA5-35-135-7-4.0
G52273	PTA5-35-135-7-6.0
G52274	PTA5-35-135-7-8.0

Advance® 35LP

LOW-PROFILE PTA BALLOON DILATATION CATHETERS

Order Number	Reference Part Number
.035 inch Wire Guide – 135 cm Shaft	
G52275	PTA5-35-135-7-10.0
G52276	PTA5-35-135-7-12.0
G52277	PTA5-35-135-7-14.0
G52278	PTA5-35-135-8-2.0
G52279	PTA5-35-135-8-4.0
G52280	PTA5-35-135-8-6.0
G52281	PTA5-35-135-8-8.0
G52282	PTA5-35-135-8-10.0
G52283	PTA5-35-135-8-12.0
G52284	PTA5-35-135-8-14.0
G52285	PTA5-35-135-9-3.0
G52286	PTA5-35-135-9-4.0
G52287	PTA5-35-135-9-6.0
G52288	PTA5-35-135-9-8.0
G52289	PTA5-35-135-9-10.0
G52290	PTA5-35-135-9-12.0
G52291	PTA5-35-135-9-14.0
G52292	PTA5-35-135-10-3.0
G52293	PTA5-35-135-10-4.0
G52294	PTA5-35-135-10-6.0
G52295	PTA5-35-135-10-8.0
G52296	PTA5-35-135-10-10.0
G52297	PTA5-35-135-10-12.0
G52298	PTA5-35-135-10-14.0
G52299	PTA5-35-135-12-4.0
G52300	PTA5-35-135-12-8.0
G52301	PTA5-35-135-12-10.0
G52302	PTA5-35-135-12-12.0
G52303	PTA5-35-135-12-14.0

ACCESS

TARGET

TREAT

Ordering Information

Zilver Flex™

VASCULAR SELF-EXPANDING STENTS

Order Number	Reference Part Number
.035 inch Wire Guide – 80 cm Shaft	
G51855	ZFV6-80-5-2.0
G51857	ZFV6-80-5-3.0
G51859	ZFV6-80-5-4.0
G51860	ZFV6-80-5-6.0
G51862	ZFV6-80-5-8.0
G51864	ZFV6-80-5-10.0
G51866	ZFV6-80-5-12.0
G51868	ZFV6-80-5-14.0
G52842	ZFV6-80-5-17.0
G52843	ZFV6-80-5-20.0
G51870	ZFV6-80-6-2.0
G51871	ZFV6-80-6-3.0
G51873	ZFV6-80-6-4.0
G51875	ZFV6-80-6-6.0
G51877	ZFV6-80-6-8.0
G51879	ZFV6-80-6-10.0
G51880	ZFV6-80-6-12.0
G51882	ZFV6-80-6-14.0
G52844	ZFV6-80-6-17.0
G52845	ZFV6-80-6-20.0
G51884	ZFV6-80-7-2.0
G51886	ZFV6-80-7-3.0
G51888	ZFV6-80-7-4.0
G51889	ZFV6-80-7-6.0
G51891	ZFV6-80-7-8.0
G51893	ZFV6-80-7-10.0
G51895	ZFV6-80-7-12.0
G51897	ZFV6-80-7-14.0

Zilver Flex™

VASCULAR SELF-EXPANDING STENTS

Order Number	Reference Part Number
.035 inch Wire Guide – 80 cm Shaft	
G52846	ZFV6-80-7-17.0
G52847	ZFV6-80-7-20.0
G51898	ZFV6-80-8-2.0
G51900	ZFV6-80-8-3.0
G51902	ZFV6-80-8-4.0
G51903	ZFV6-80-8-6.0
G51905	ZFV6-80-8-8.0
G51907	ZFV6-80-8-10.0
G51908	ZFV6-80-8-12.0
G51910	ZFV6-80-8-14.0
G52848	ZFV6-80-8-17.0
G52849	ZFV6-80-8-20.0
G51915	ZFV6-80-9-2.0
G51916	ZFV6-80-9-3.0
G51917	ZFV6-80-9-4.0
G51919	ZFV6-80-9-6.0
G51920	ZFV6-80-9-8.0
G51922	ZFV6-80-9-10.0
G51923	ZFV6-80-9-12.0
G51924	ZFV6-80-9-14.0
G51925	ZFV6-80-10-2.0
G51928	ZFV6-80-10-3.0
G51929	ZFV6-80-10-4.0
G51931	ZFV6-80-10-6.0
G51933	ZFV6-80-10-8.0
G51935	ZFV6-80-10-10.0
G51937	ZFV6-80-10-12.0
G51939	ZFV6-80-10-14.0

ACCESS

TARGET

TREAT

Ordering Information

Zilver Flex™

VASCULAR SELF-EXPANDING STENTS

Order Number	Reference Part Number
.035 inch Wire Guide – 125 cm Shaft	
G51941	ZFV6-125-5-2.0
G51942	ZFV6-125-5-3.0
G51944	ZFV6-125-5-4.0
G51945	ZFV6-125-5-6.0
G51943	ZFV6-125-5-8.0
G51940	ZFV6-125-5-10.0
G51938	ZFV6-125-5-12.0
G51936	ZFV6-125-5-14.0
G52850	ZFV6-125-5-17.0
G52851	ZFV6-125-5-20.0
G51934	ZFV6-125-6-2.0
G51932	ZFV6-125-6-3.0
G51930	ZFV6-125-6-4.0
G51927	ZFV6-125-6-6.0
G51926	ZFV6-125-6-8.0
G51921	ZFV6-125-6-10.0
G51918	ZFV6-125-6-12.0
G51914	ZFV6-125-6-14.0
G52852	ZFV6-125-6-17.0
G52853	ZFV6-125-6-20.0
G51913	ZFV6-125-7-2.0
G51912	ZFV6-125-7-3.0
G51911	ZFV6-125-7-4.0
G51909	ZFV6-125-7-6.0
G51906	ZFV6-125-7-8.0
G51904	ZFV6-125-7-10.0
G51901	ZFV6-125-7-12.0
G51899	ZFV6-125-7-14.0

Zilver Flex™

VASCULAR SELF-EXPANDING STENTS

Order Number	Reference Part Number
.035 inch Wire Guide – 125 cm Shaft	
G52854	ZFV6-125-7-17.0
G52855	ZFV6-125-7-20.0
G51896	ZFV6-125-8-2.0
G51894	ZFV6-125-8-3.0
G51892	ZFV6-125-8-4.0
G51890	ZFV6-125-8-6.0
G51887	ZFV6-125-8-8.0
G51885	ZFV6-125-8-10.0
G51883	ZFV6-125-8-12.0
G51878	ZFV6-125-8-14.0
G52856	ZFV6-125-8-17.0
G52857	ZFV6-125-8-20.0
G51881	ZFV6-125-9-2.0
G51876	ZFV6-125-9-3.0
G51874	ZFV6-125-9-4.0
G51872	ZFV6-125-9-6.0
G51869	ZFV6-125-9-8.0
G51867	ZFV6-125-9-10.0
G51865	ZFV6-125-9-12.0
G51863	ZFV6-125-9-14.0
G51861	ZFV6-125-10-2.0
G51858	ZFV6-125-10-3.0
G51856	ZFV6-125-10-4.0
G51854	ZFV6-125-10-6.0
G51853	ZFV6-125-10-8.0
G51852	ZFV6-125-10-10.0
G51851	ZFV6-125-10-12.0
G51849	ZFV6-125-10-14.0

ACCESS

TARGET

TREAT

Ordering Information

Zilver® PTX®

DRUG-ELUTING PERIPHERAL STENTS

Order Number	Reference Part Number
.035 inch Wire Guide – 80 cm Shaft	
G55284	ZIV6-35-80-5.0-40-PTX
G55285	ZIV6-35-80-5.0-60-PTX
G55286	ZIV6-35-80-5.0-80-PTX
G55287	ZIV6-35-80-5.0-100-PTX
G55288	ZIV6-35-80-5.0-120-PTX
G55291	ZIV6-35-80-6.0-40-PTX
G55292	ZIV6-35-80-6.0-60-PTX
G55293	ZIV6-35-80-6.0-80-PTX
G55294	ZIV6-35-80-6.0-100-PTX
G55295	ZIV6-35-80-6.0-120-PTX
G55301	ZIV6-35-80-7.0-40-PTX
G55302	ZIV6-35-80-7.0-60-PTX
G55303	ZIV6-35-80-7.0-80-PTX
G55304	ZIV6-35-80-7.0-100-PTX
G55305	ZIV6-35-80-7.0-120-PTX
G55298	ZIV6-35-80-8.0-40-PTX
G55272	ZIV6-35-80-8.0-60-PTX
G55273	ZIV6-35-80-8.0-80-PTX
G55274	ZIV6-35-80-8.0-100-PTX
G55271	ZIV6-35-80-8.0-120-PTX

Zilver® PTX®

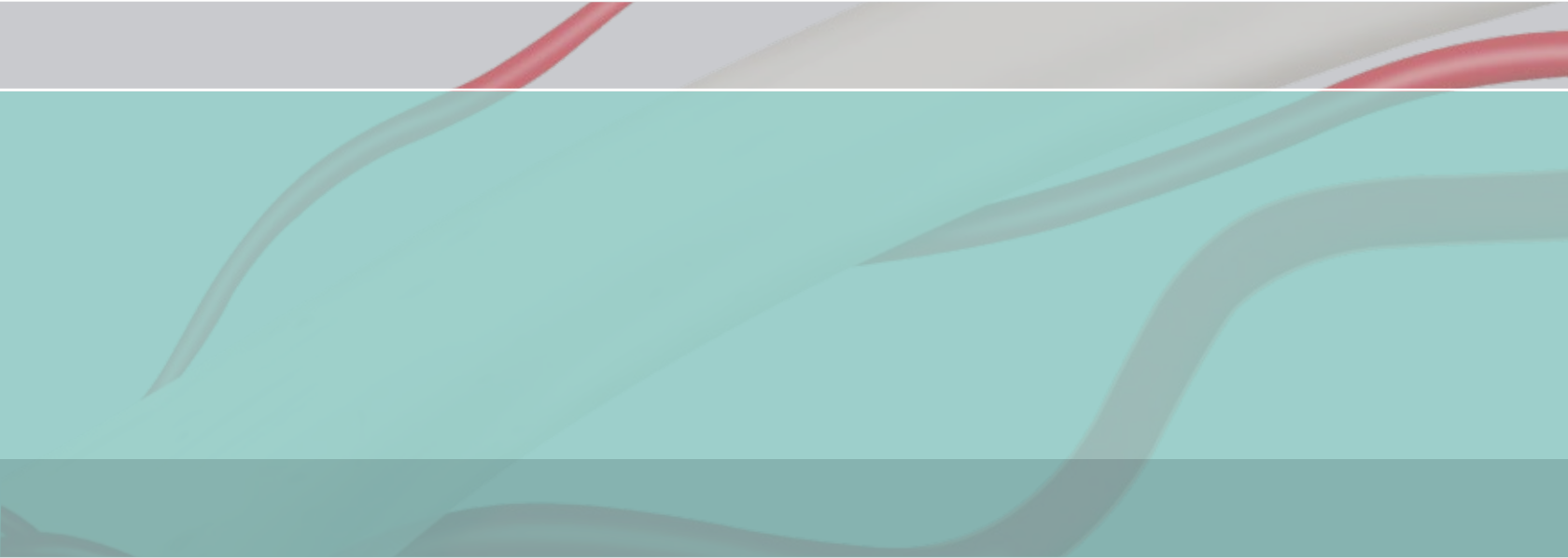
DRUG-ELUTING PERIPHERAL STENTS

Order Number	Reference Part Number
.035 inch Wire Guide – 125 cm Shaft	
G51333	ZIV6-35-125-5.0-40-PTX
G51334	ZIV6-35-125-5.0-60-PTX
G51335	ZIV6-35-125-5.0-80-PTX
G51336	ZIV6-35-125-5.0-100-PTX
G51337	ZIV6-35-125-5.0-120-PTX
G51341	ZIV6-35-125-6.0-40-PTX
G51342	ZIV6-35-125-6.0-60-PTX
G51343	ZIV6-35-125-6.0-80-PTX
G51344	ZIV6-35-125-6.0-100-PTX
G51345	ZIV6-35-125-6.0-120-PTX
G51349	ZIV6-35-125-7.0-40-PTX
G51350	ZIV6-35-125-7.0-60-PTX
G51351	ZIV6-35-125-7.0-80-PTX
G51352	ZIV6-35-125-7.0-100-PTX
G51353	ZIV6-35-125-7.0-120-PTX
G51356	ZIV6-35-125-8.0-40-PTX
G51357	ZIV6-35-125-8.0-60-PTX
G51358	ZIV6-35-125-8.0-80-PTX
G51359	ZIV6-35-125-8.0-100-PTX
G51360	ZIV6-35-125-8.0-120-PTX

ACCESS

TARGET

TREAT



Customer Service Centers

AORTIC INTERVENTION
CRITICAL CARE
ENDOSCOPY
INTERVENTIONAL RADIOLOGY
LEAD MANAGEMENT
PERIPHERAL INTERVENTION
SURGERY
UROLOGY
WOMEN'S HEALTH



EMEA: EDI - www.cookmedical.com/edi.do
Distributors: +353 61239240, ssc.distributors@cookmedical.com
Austria: +43 179567121, oe.orders@cookmedical.com
Belgium: +32 27001633, be.orders@cookmedical.com
Denmark: +45 38487607, da.orders@cookmedical.com
France: +33 171230269, fr.orders@cookmedical.com
Germany: +49 6950072804, de.orders@cookmedical.com
Hungary: +36 17779199, hu.orders@cookmedical.com
Ireland: +353 61239252, ie.orders@cookmedical.com
Italy: +39 0269682853, it.orders@cookmedical.com
Netherlands: +31 202013367, nl.orders@cookmedical.com
Norway: +47 23162968, no.orders@cookmedical.com
Poland: +48 223060159, pl.orders@cookmedical.com
Spain: +34 912702691, es.orders@cookmedical.com
Sweden: +46 858769468, se.orders@cookmedical.com
Switzerland - French: +41 448009609, fr.orders@cookmedical.com
Switzerland - Italian: +41 448009609, it.orders@cookmedical.com
Switzerland - German: +41 448009609, de.orders@cookmedical.com
United Kingdom: +44 2073654183, uk.orders@cookmedical.com
www.cookmedical.com

Americas: EDI - www.cookmedical.com/edi.do
Phone: +1 812.339.2235, 800.457.4500, Fax: 800.554.8335
E-mail: orders@cookmedical.com

Australia:
Phone: +61 738411188, 1800777222, Fax: +61 738411288, 1800077283
E-mail: cau.custserv@cookmedical.com

