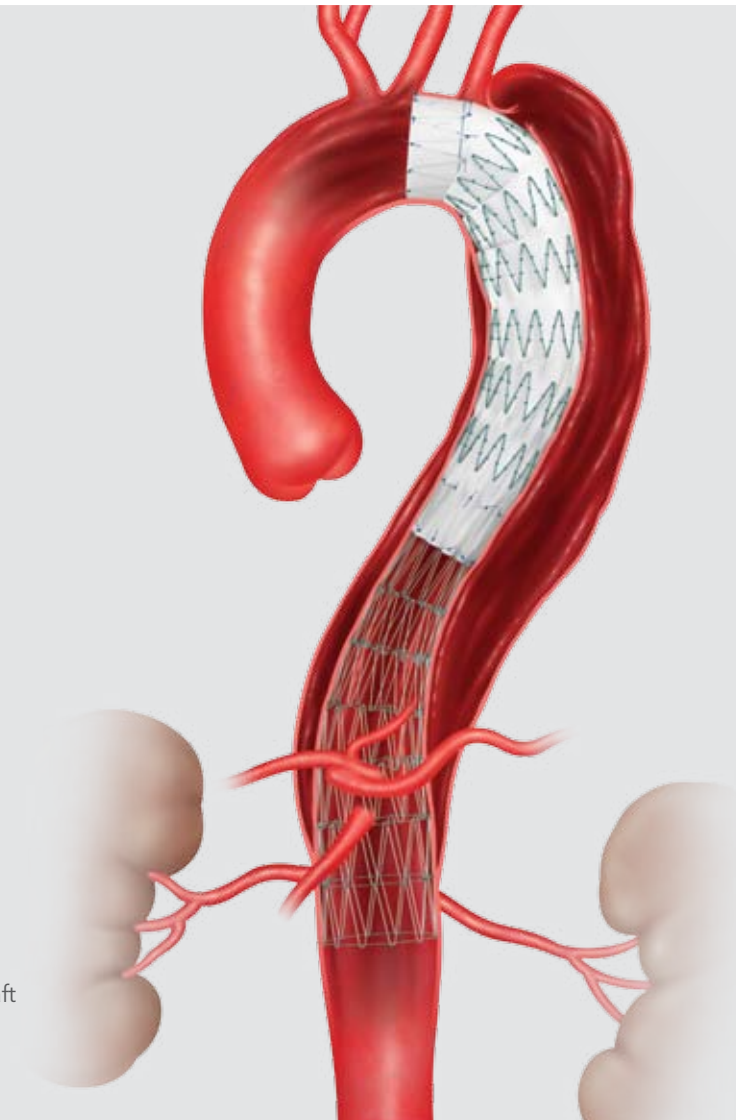




# Zenith<sup>®</sup> Dissection

ENDOVASCULAR SYSTEM



featuring the  
Zenith<sup>®</sup> TX2<sup>®</sup>  
TAA Endovascular Graft  
with Pro-Form<sup>®</sup>

## Transcend: Control

Expect disease-specific solutions for type B dissection.



# Zenith® Dissection

ENDOVASCULAR SYSTEM

## It's about control.

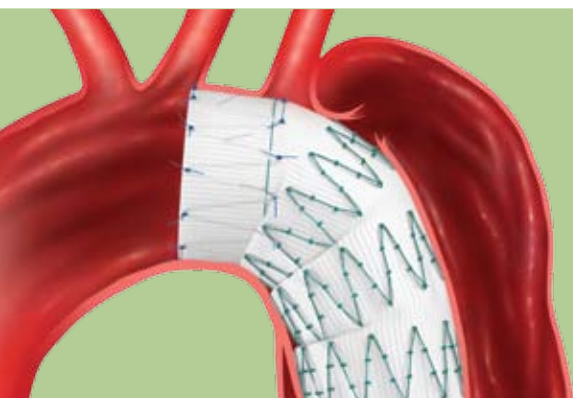
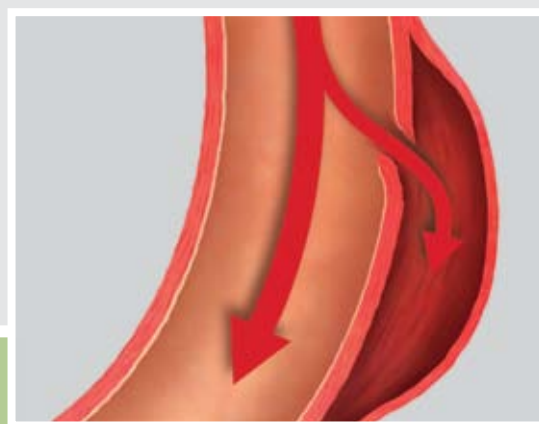
The Zenith Dissection Endovascular System is the first system ever approved specifically for treating type B dissection. It features the Zenith® TX2® TAA Endovascular Graft with Pro-Form® to seal the primary entry tear, the Zenith Dissection Endovascular Stent to provide support for the delaminated segment of aorta, and signature Zenith trigger-wire control during deployment. The end result is a more complete and disease-specific solution for treatment of type B dissection.

Going beyond. That's what it means to Transcend.  
That's the essence of Zenith.

## control Malperfusion

The Zenith Dissection Endovascular System provides sealing, reinforcement and branch vessel reperfusion. Specifically designed to treat type B dissection, this system goes beyond traditional medical management and the use of stent grafts indicated for aneurysms.

- Uses "seal-and-stent" approach, encouraging false lumen stasis and thrombosis, in addition to branch vessel reperfusion.
- Covers the primary entry tear, terminating false lumen patency and discouraging aneurismal progression.
- Assists remodeling of the aorta by providing support to delaminated segments.



Zenith TX2 with Pro-Form  
Proximal Component

## control Design

**Zenith Dissection** - Bare stents provide support for the delaminated segment of aorta and have large openings, allowing access to the visceral branches (renals, mesenteric, etc.) should secondary intervention be necessary.

- The bare stent is available in three lengths (4, 6 or 8 stent segments) and two diameters (36 mm and 46 mm).
- Self-expanding bare stents have smaller-diameter stent wires than TX2 with Pro-Form, which exert less radial force on the true lumen.

**Zenith TX2 with Pro-Form** - A variety of diameters and lengths provides for adequate closure of the primary entry tear while not covering any more of the aorta and visceral branches than necessary.

- Pro-Form technology provides unrivaled proximal conformity and apposition in the aortic arch for proper sealing of the primary entry tear.

## control Delivery

The Z-Trak Plus® Introduction System was built to give you unparalleled control over delivery of TX2 with Pro-Form.

- Trigger-wire deployment of the TX2 with Pro-Form stent graft, in a proximal trifold configuration, ensures that it orients parallel to the aortic wall and lands where intended, without wind-socking or blowback effects from aortic flow.
- The Zenith Dissection Endovascular Stent deploys coaxially, with its introducer(s) fitting inside the Flexor® Introducer Sheath.
- Trigger wires tethered to the bare Zenith Dissection stent provide accurate placement and controlled release when overlapped within the TX2 with Pro-Form stent graft.



### Customer Service Centers

**EMEA:** EDI - [www.cookmedical.com/edi.do](http://www.cookmedical.com/edi.do)  
Distributors: +353 61239240, [ssc.distributors@cookmedical.com](mailto:ssc.distributors@cookmedical.com)  
Austria: +43 179567121, [oe.orders@cookmedical.com](mailto:oe.orders@cookmedical.com)  
Belgium: +32 27001633, [be.orders@cookmedical.com](mailto:be.orders@cookmedical.com)  
Denmark: +45 38487607, [da.orders@cookmedical.com](mailto:da.orders@cookmedical.com)  
Finland: +358 972519996, [fi.orders@cookmedical.com](mailto:fi.orders@cookmedical.com)  
France: +33 171230269, [fr.orders@cookmedical.com](mailto:fr.orders@cookmedical.com)  
Germany: +49 6950072804, [de.orders@cookmedical.com](mailto:de.orders@cookmedical.com)  
Hungary: +36 17779199, [hu.orders@cookmedical.com](mailto:hu.orders@cookmedical.com)  
Ireland: +353 61239252, [ie.orders@cookmedical.com](mailto:ie.orders@cookmedical.com)  
Italy: +39 0269682853, [it.orders@cookmedical.com](mailto:it.orders@cookmedical.com)  
Netherlands: +31 202013367, [nl.orders@cookmedical.com](mailto:nl.orders@cookmedical.com)  
Norway: +47 23162968, [no.orders@cookmedical.com](mailto:no.orders@cookmedical.com)  
Spain: +34 912702691, [es.orders@cookmedical.com](mailto:es.orders@cookmedical.com)  
Sweden: +46 858769468, [se.orders@cookmedical.com](mailto:se.orders@cookmedical.com)  
Switzerland - French: +41 448009609, [fr.orders@cookmedical.com](mailto:fr.orders@cookmedical.com)  
Switzerland - Italian: +41 448009609, [it.orders@cookmedical.com](mailto:it.orders@cookmedical.com)  
Switzerland - German: +41 448009609, [de.orders@cookmedical.com](mailto:de.orders@cookmedical.com)  
United Kingdom: +44 2073654183, [uk.orders@cookmedical.com](mailto:uk.orders@cookmedical.com)

[www.cookmedical.com](http://www.cookmedical.com)

**Americas:** EDI - [www.cookmedical.com/edi.do](http://www.cookmedical.com/edi.do)  
Phone: +1 812.339.2235, 800.457.4500, Fax: 800.554.8335  
E-mail: [orders@cookmedical.com](mailto:orders@cookmedical.com)

**Australia:**  
Phone: +61 738411188, 1800777222, Fax: +61 738411288, 1800077283  
E-mail: [cau.custserv@cookmedical.com](mailto:cau.custserv@cookmedical.com)

