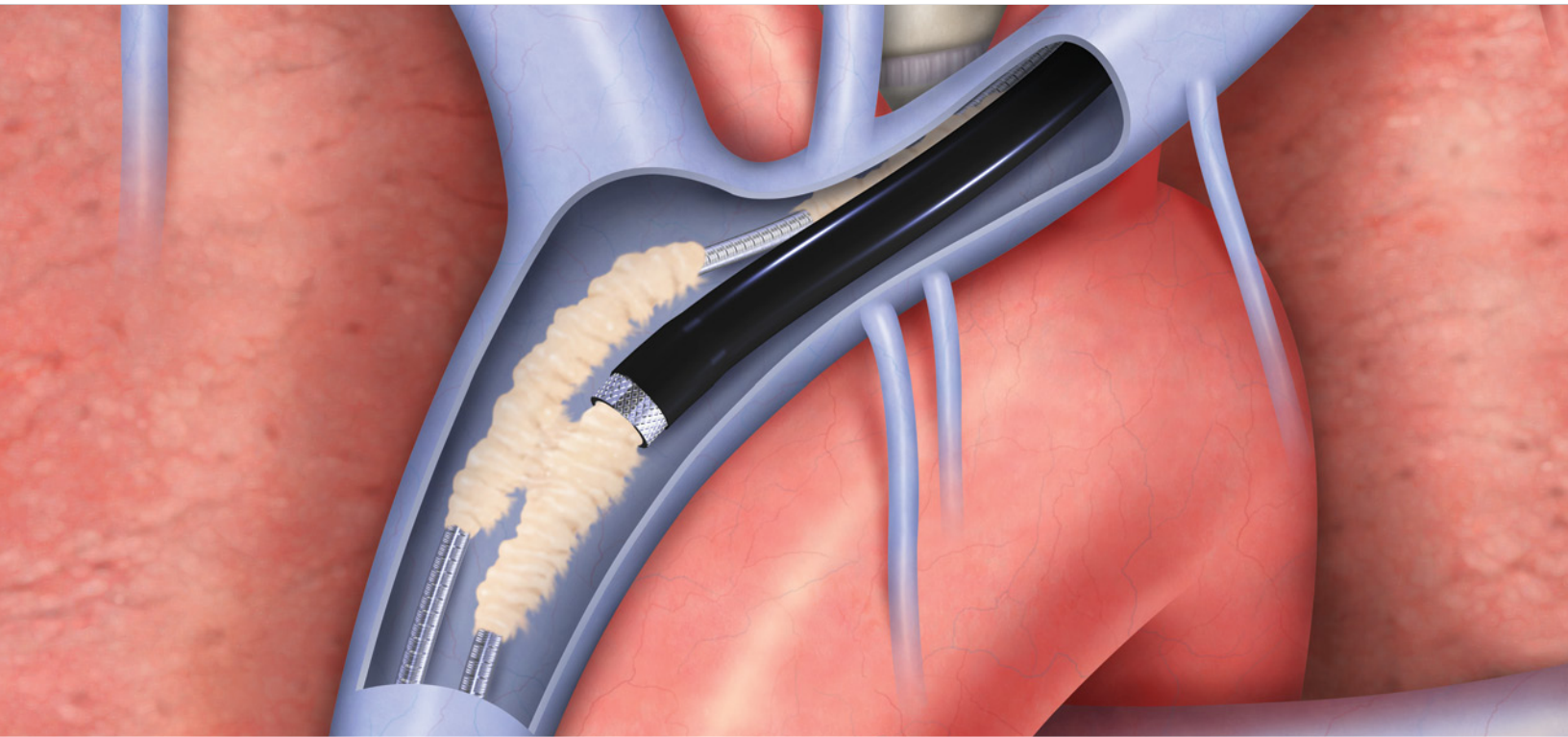


Enhance control exactly
where you need it.



SteadySheath™

EVOLUTION® TISSUE STABILIZATION SHEATH

The SteadySheath™ Evolution® Tissue Stabilization Sheath is an outer sheath that is specially crafted to augment the already highly regarded performance of the Evolution and Evolution RL devices during Lead Extraction™ procedures.



www.cookmedical.com



SteadySheath™

EVOLUTION® TISSUE STABILIZATION SHEATH

The SteadySheath has a textured, stainless-steel distal tip that engages the binding adhesions that anchor targeted cardiac leads in place. By stabilizing these adhesions, this specialized outer sheath helps to minimize vessel movement when the powered inner sheath is activated. The unique surface on the tip can also help to disrupt the challenging adhesions that are associated with chronically implanted cardiac leads.

- Highly visible under fluoroscopy
- Made from the same highly flexible, low-surface-resistance PTFE that has been used in Lead Extraction for over 20 years
- SteadySheath is compatible with all sizes of Evolution RL and the original Evolution
- SteadySheath Shortie is compatible with all sizes of Evolution Shortie RL and the original Evolution Shortie

Order Number	Reference Part Number	Compatible Sheath Fr	SteadySheath ID Fr	SteadySheath OD Fr	Length cm
SteadySheath Evolution Tissue Stabilization Sheath					
G25082	LR-TSS-9.0	9.0	14.2	17.2	36.5
G25083	LR-TSS-11.0	11.0	16.2	19.4	36.5
G25084	LR-TSS-13.0	13.0	18.1	21.3	36.5
SteadySheath Evolution Shortie Tissue Stabilization Sheath					
G31908	LR-TSS-SH-9.0	9.0	14.2	17.2	11.2
G31923	LR-TSS-SH-11.0	11.0	16.2	19.4	11.2

Some products or part numbers may not be available in all markets. Contact your local Cook representative or Customer Service for details.

Customer Service

EMEA: EDI - www.cookmedical.com/edi.do
 Distributors: +353 61239240, ssc.distributors@cookmedical.com
 Austria: +43 179567121, oe.orders@cookmedical.com
 Belgium: +32 27001633, be.orders@cookmedical.com
 Denmark: +45 38487607, da.orders@cookmedical.com
 Finland: +358 972519996, fi.orders@cookmedical.com
 France: +33 171230269, fr.orders@cookmedical.com
 Germany: +49 6950072804, de.orders@cookmedical.com
 Hungary: +36 17779199, hu.orders@cookmedical.com
 Ireland: +353 61239252, ie.orders@cookmedical.com
 Italy: +39 0269682853, it.orders@cookmedical.com
 Netherlands: +31 202013367, nl.orders@cookmedical.com
 Norway: +47 23162968, no.orders@cookmedical.com
 Spain: +34 912702691, es.orders@cookmedical.com
 Sweden: +46 858769468, se.orders@cookmedical.com
 Switzerland - French: +41 448009609, fr.orders@cookmedical.com
 Switzerland - Italian: +41 448009609, it.orders@cookmedical.com
 Switzerland - German: +41 448009609, de.orders@cookmedical.com
 United Kingdom: +44 2073654183, uk.orders@cookmedical.com

www.cookmedical.com

Americas: EDI - www.cookmedical.com/edi.do
 Phone: +1 812.339.2235, 800.457.4500, Fax: 800.554.8335
 E-mail: orders@cookmedical.com

Australia:
 Phone: +61 738411188, 1800777222, Fax: +61 738411288, 1800077283
 E-mail: cau.custserv@cookmedical.com

